

## Blast Nozzles

■ Small ■ Large ■ Specialty ■ Angle ■ Accessories



# AIN Water Induction Nozzles



## Product Features

PanBlast™ AIN Blasting Nozzles feature both an adjustable water feed and adjustable venturi air injector ports for optimum air/water atomization. These water induction nozzles can be utilized in place of conventional nozzles with no modifications to standard blasting equipment required.

- ▶ Durable aluminum jacket.
- ▶ Tungsten carbide liner.
- ▶ Air and water both fully adjustable.
- ▶ 50 mm (2") coarse contractor thread.
- ▶ Available in all common sizes.
- ▶ Low water consumption.
- ▶ Water connection line and shutoff valve standard.
- ▶ Can be used as a conventional nozzle.

## Common Applications

- ▶ Wet slurry blasting.
- ▶ Operations requiring minimal abrasive dust.

## Complementary Products



Pressure Blast Pots



Blast Hoses



Nylon Nozzle Holders



Nylon Couplings



Aluminum Nozzle Holders



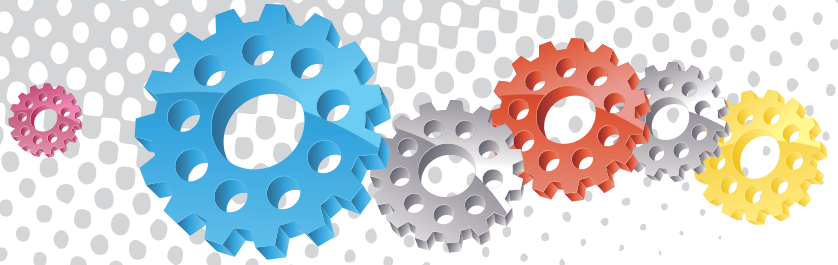
Steel Couplings



AirFlo Pneumatic Handle



Nozzle Washers



BAC-NZ-0510-00



BAC-NZ-0511-00



BAC-NZ-0512-00



BAC-NZ-0513-00



BAC-NZ-0514-00

## PanBlast™ AIN Water Induction Nozzles

Stock Code	Description	Orifice	Entry	Water Consumption	Weight
BAC-NZ-0510-00	Blast Nozzle AIN-4 Alum/Tung Induction	Φ6.4 mm (1/4")	32 mm (1-1/4")	1.4 - 1.9 l/min	1.50 kg (3.30 lbs)
BAC-NZ-0511-00	Blast Nozzle AIN-5 Alum/Tung Induction	Φ8 mm (5/16")	32 mm (1-1/4")	2.1 - 2.3 l/min	1.40 kg (3.09 lbs)
BAC-NZ-0512-00	Blast Nozzle AIN-6 Alum/Tung Induction	Φ9.5 mm (3/8")	32 mm (1-1/4")	2.1 - 2.5 l/min	1.42 kg (3.13 lbs)
BAC-NZ-0513-00	Blast Nozzle AIN-7 Alum/Tung Induction	Φ11 mm (7/16")	32 mm (1-1/4")	3.0 - 3.3 l/min	1.60 kg (3.53 lbs)
BAC-NZ-0514-00	Blast Nozzle AIN-8 Alum/Tung Induction	Φ12.5 mm (1/2")	32 mm (1-1/4")	3.7 - 3.9 l/min	1.70 kg (3.75 lbs)