



Couplings & Nozzle Holders

■ Nylon ■ Steel ■ Aluminum ■ Accessories



Steel Hose & Pot Couplings



Product Features

PanBlast™ Steel Hose Couplings (SHC) are designed for tough, impact-resistant connection of the blast hose to the pot, or coupling of multiple blast hoses. Steel couplings are suitable for most general blasting operations where the risk of impact damage is high.

- ▶ Durable steel construction.
- ▶ Corrosion resistant, zinc plated surface.
- ▶ Internal raised thread eases blast hose fitting and prevents slippage.
- ▶ Gaskets and safety lock pins included.
- ▶ Threaded version available for abrasive feed valve connection.
- ▶ Compliant to OSHA 1915.34(c)(1)(ii) hose couplings requirements.

Common Applications

- ▶ On site industrial and commercial blasting.
- ▶ Blast and painting contractor yard work.
- ▶ Blast room applications.
- ▶ In situ blasting in shipyards and slipways.

Complementary Products



Nylon Couplings



Whip Check Cables



Coupling Gaskets



Aluminum Nozzle Holders



AirFlo Pneumatic Handle



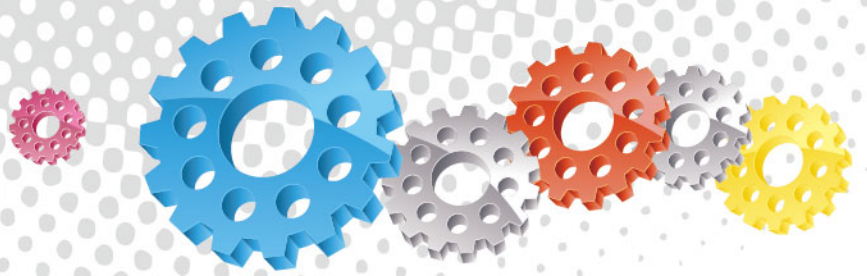
ATN-S Blast Nozzles



ABN Blast Nozzles



Blast Hoses



BAC-HC-0088-00



BAC-HC-0090-00



BAC-HC-0082-00



BAC-HC-PB-0014



BAC-HC-0092-00



BAC-HC-0084-00



BAC-HC-0086-00



BAC-HC-0080-00



BAC-HC-0105-00

Stock Code	Description	Claw Size	To Fit Hose OD	Weight	Gasket To Suit
BAC-HC-0088-00	SHC-0 Steel Hose Coupling	S	Φ28 mm (1-1/8")	0.25 kg (0.55 lbs)	BCG-0 (BAC-HC-PB-0015)
BAC-HC-0090-00	SHC-1/2 Steel Hose Coupling	M	Φ34 mm (1-5/16")	0.27 kg (0.60 lbs)	BCG-1/2 (BAC-HC-PB-0016)
BAC-HC-0082-00	SHC-1 Steel Hose Coupling	L	Φ38 mm (1-1/2")	0.50 kg (1.10 lbs)	BCG-1 (BAC-HC-PB-0017)
BAC-HC-PB-0014	SHC-2 Steel Hose Coupling	L	Φ48 mm (1-7/8")	0.80 kg (1.76 lbs)	
BAC-HC-0092-00	SHC-3 Steel Hose Coupling	L	Φ55 mm (2-3/16")	0.85 kg (1.86 lbs)	
Stock Code	Description	Claw Size	Thread Size	Weight	Gasket To Suit
BAC-HC-0084-00	STC-0 Steel Threaded Pot Coupling	S	Φ13 mm (1/2")	0.15 kg (0.33 lbs)	BCG-0 (BAC-HC-PB-0015)
BAC-HC-0086-00	STC-1/2 Steel Threaded Pot Coupling	M	Φ13 mm (1/2")	0.40 kg (0.88 lbs)	BCG-1/2 (BAC-HC-PB-0016)
BAC-HC-0080-00	STC-1 Steel Threaded Pot Coupling	L	Φ32 mm (1-1/4")	0.45 kg (0.98 lbs)	BCG-1 (BAC-HC-PB-0017)
BAC-HC-0105-00	STC-2 Steel Threaded Pot Coupling	L	Φ38 mm (1-1/2")	0.43 kg (0.95 lbs)	