

## Blast Cabinets

■ Light Duty ■ Heavy Duty ■ Pressure Blast ■ Plastic Media Blast



# PB2000P Blast Cabinet



## Product Features

The PanBlast™ PB2000P Blast Cabinet is a highly efficient, general purpose, industrial blast cabinet, compatible with a wide range of abrasive media, including:

- \* FastBlast™ Chilled Iron Grit
- \* QuickCut™ Aluminium Oxide
- \* EnviroGrit™ Garnet
- \* PanaGrit™ Cast Steel Grit
- \* BrightBlast™ Glass Beads
- \* PanaShot™ Steel Shot

- ▶ Up to three times faster than suction blast systems.
- ▶ PanBlast™ 31 liters (1.1ft³) blast pot.
- ▶ Cyclone type abrasive separator cleans abrasive during use.
- ▶ Safety door interlock.
- ▶ Integral dry twin cartridge reverse pulse dust collector for clear visibility.
- ▶ Dual heavy duty wear resistant rubber gloves.
- ▶ Quick-change dual laminated glass viewing windows - no tools required.
- ▶ Fina II abrasive metering valve.
- ▶ Compressed air regulator and gauge.
- ▶ Standard air blow down gun.

## Common Applications

- ▶ De-scale and de-rust metal.
- ▶ Remove paint and coatings.
- ▶ Remove burrs, flashings and sand from castings and moldings.
- ▶ Decorative finishing of non-ferrous metals.
- ▶ Stone and glass etching.
- ▶ Mold cleaning.

## Complementary Products



ATN-S Blast Nozzles



ABN-S Blast Nozzles



ATN-M Blast Nozzles



AER85 Vacuum Blaster



Pow Air Vac



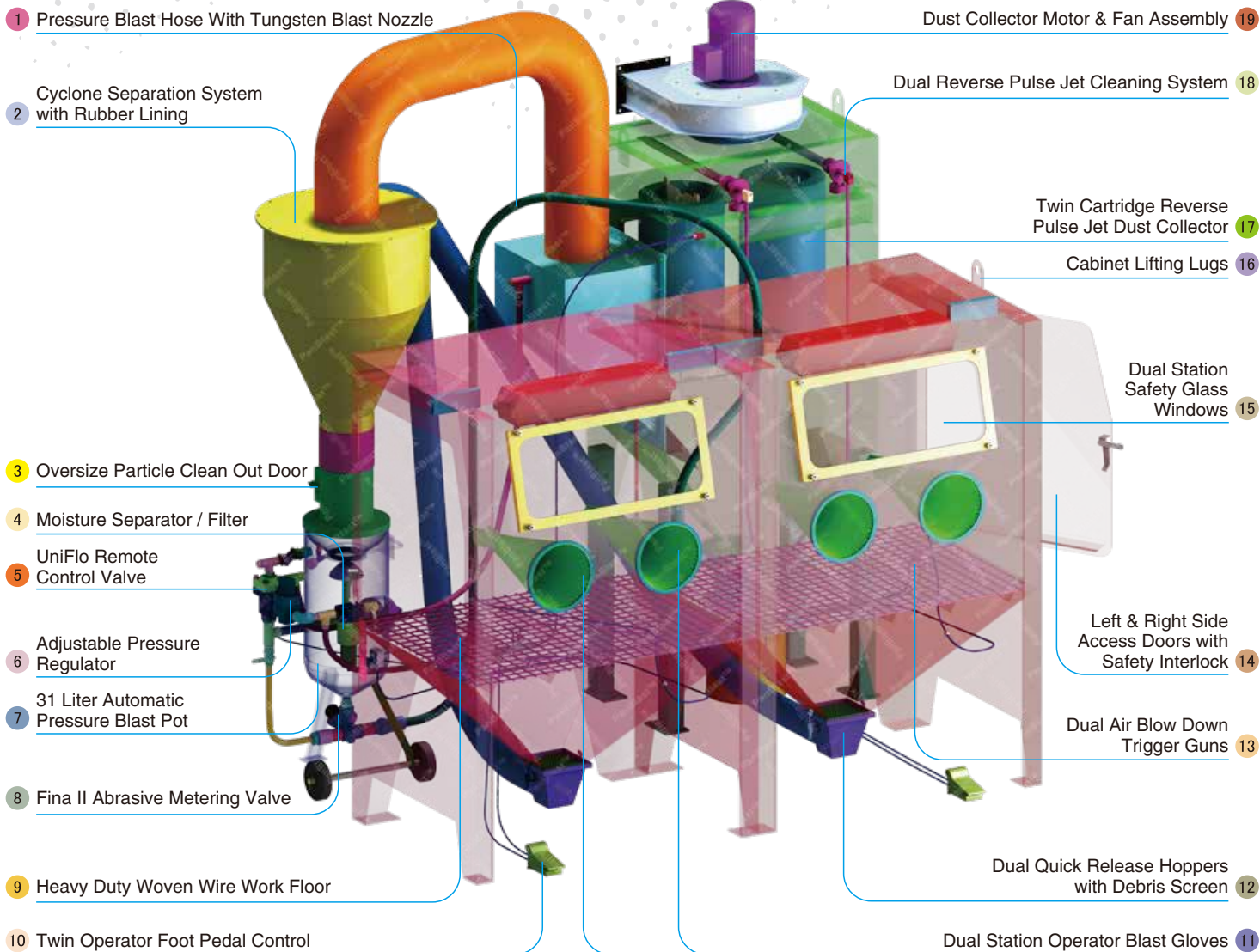
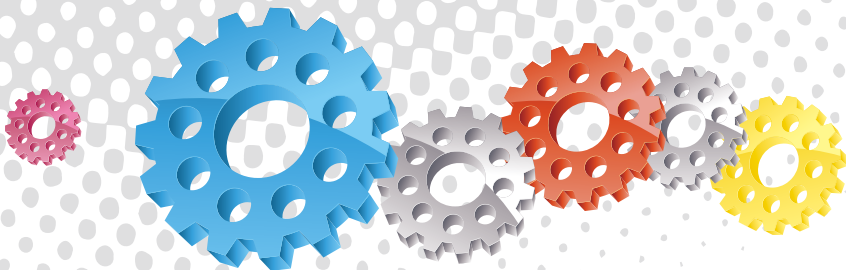
Filter Cartridge



Moisture Separator



Cabinet Window Cover



1 Pressure Blast Hose With Tungsten Blast Nozzle

Dust Collector Motor & Fan Assembly 19

2 Cyclone Separation System with Rubber Lining

Dual Reverse Pulse Jet Cleaning System 18

3 Oversize Particle Clean Out Door

Twin Cartridge Reverse Pulse Jet Dust Collector 17

4 Moisture Separator / Filter

Cabinet Lifting Lugs 16

5 UniFlo Remote Control Valve

Dual Station Safety Glass Windows 15

6 Adjustable Pressure Regulator

Left & Right Side Access Doors with Safety Interlock 14

7 31 Liter Automatic Pressure Blast Pot

Dual Air Blow Down Trigger Guns 13

8 Fina II Abrasive Metering Valve

Dual Quick Release Hoppers with Debris Screen 12

9 Heavy Duty Woven Wire Work Floor

Dual Station Operator Blast Gloves 11

10 Twin Operator Foot Pedal Control

## Component Highlights



1 Pressure Blast Hose With Tungsten Blast Nozzle

8 Fina II Abrasive Metering Valve

15 Dual Station Safety Glass Windows

2 Cyclone Separation System with Rubber Lining

9 Heavy Duty Woven Wire Work Floor

16 Cabinet Lifting Lugs

3 Oversize Particle Clean Out Door

10 Twin Operator Foot Pedal Control

17 Twin Cartridge Reverse Pulse Jet Dust Collector

4 Moisture Separator / Filter

11 Dual Station Operator Blast Gloves

18 Dual Reverse Pulse Jet Cleaning System

5 UniFlo Remote Control Valve

12 Dual Quick Release Hoppers with Debris Screen

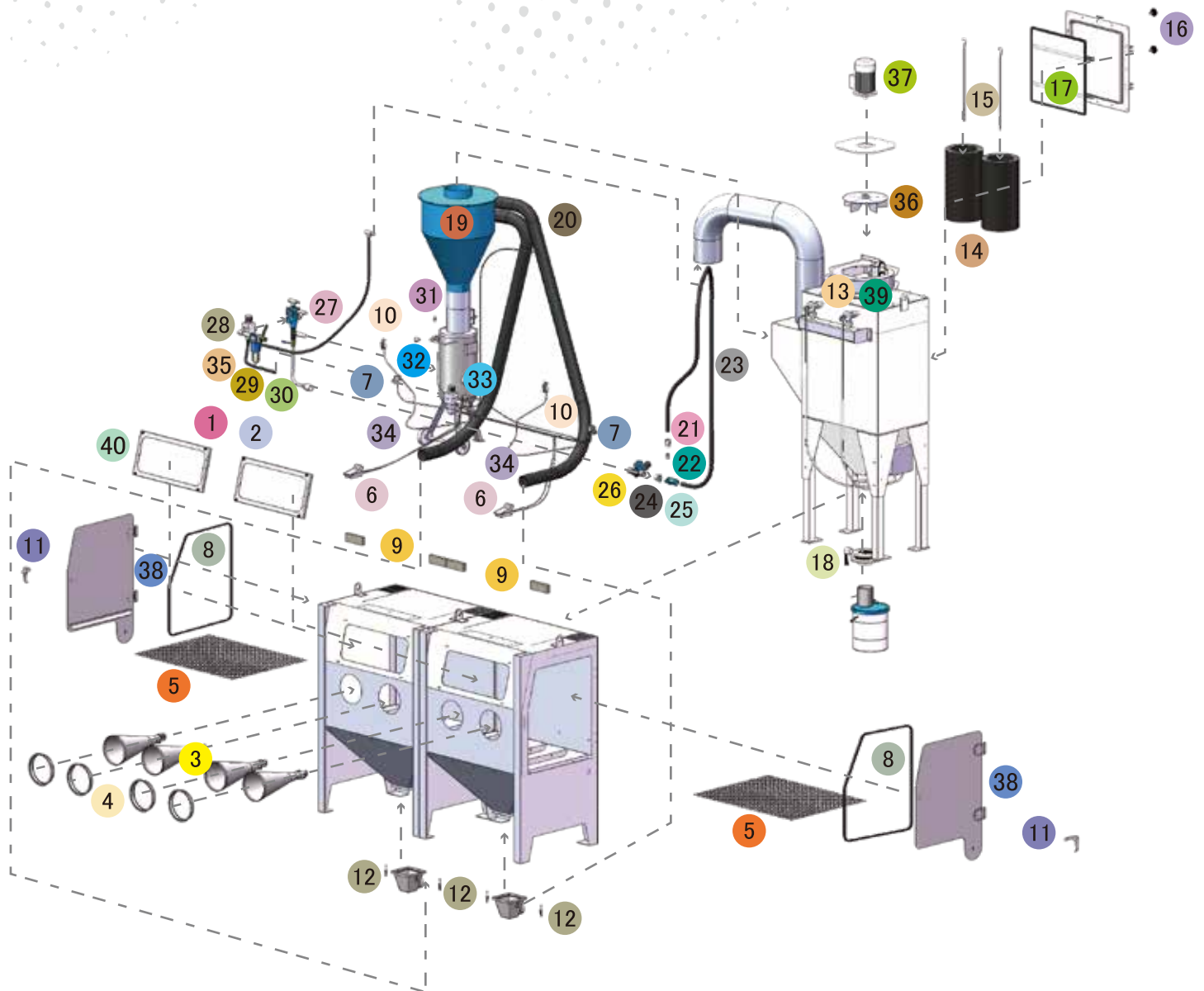
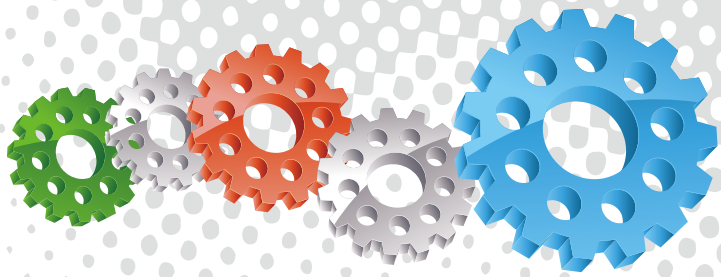
19 Dust Collector Motor & Fan Assembly

6 Adjustable Pressure Regulator

13 Dual Air Blow Down Trigger Guns

7 31 Liter Automatic Pressure Blast Pot

14 Left & Right Side Access Doors with Safety Interlock



## Assembly

Stock Code	Description	Weight
BEC-CA-PB-0013	PB2000P Blast Cabinet Assembly	1170 kg (2579 lbs)

## Optional Accessories

Stock Code	Description	Stock Code	Description
BAC-CA-PB-0244	PB1000/1500/2000 Turntable Kit	BAC-CA-PB-0280	PB2000 Linningt Kit
BAC-CA-PB-0277	Cabinet Gun Stand	BAC-CA-PB-0292	Operator Sound Kit
BAC-CA-PB-0241	Silencer Kit	BAC-CA-PB-0247	PB2000/P Track & Turntable Kit LH
BAC-CA-PB-0455	Foot Valve Guard	BAC-CA-PB-0180	PB1000 Cabinet Track & Turntable
BAC-CA-PB-0040	Tumble Basket Assembly - 300 mm Dia	BAC-CA-PB-0243	Tumble Basket Assembly - 350 mm Dia



All data and information subject to change without prior notice. Brochure reference CAT-0603-04-00

## Parts List

Item	Stock Code	Description	Qty
1	YAC-CA-PB-0101	Window Frame	2
2	BAC-CA-PB-0137	Rectangular Window	2
3	BAC-GL-PB-0003	10" Ø Cabinet Rubber Gloves	2 pr
4	BAC-CA-PB-0157	Cabinet Entry Ring	4
5	BAC-CA-PB-0126	Cabinet Floor Mesh	2
6	BAC-CA-PB-0086	Foot Valve Spring Return	2
7	YAC-CA-PB-0219	Door Interlock Valve	2
8	BAC-CA-PB-0178	Cabinet Door Seal	2
9	BAC-CA-PB-0140	Air Entry Filter	4
10	YAC-CA-PB-0145	1/4" Blow Off Gun	2
11	YAC-CA-PB-0138	Latch	2
12	YAC-FN-PB-0041	Toggle Catch	4
13	YAC-DC-0053-00	Pulse Valve	2
14	BAC-DF-PB-0002	Filter Cartridge - Size 2	2
15	YAC-DC-PB-0005	700 mm Hanger Rod	2
16	YAC-FN-0383-00	Female Star Knob	2
17	BAC-DC-0038-00	Dust Collector Access Door Seal	1
18	BAC-PF-0407-00	Butterfly Valve - 5"	1
19	BAC-CA-PB-0283	PB2000 Rubber Lined Cyclone	1
20	BAC-CA-0609-00	Recovery Hose	2
21	YAC-NZ-PB-0081	ANH 1/2 Aluminium Nozzle Holder Detail	1
22	BAC-NZ-PB-0054	Blast Nozzle ATN-3S Alum/Tungsten Short	1
23	BAC-CA-0594-00	Blast Hose	1
24	BAC-HC-PB-0057	NTC-1/2 Nylon Threaded Pot Coupling	1
25	BAC-HC-PB-0054	NHC-1/2 Nylon Hose Coupling	1
26	BAC-VA-0397-00	Fina II Valve 1/2"M X 3/4"F	1
27	BAC-RC-PB-0014	UniFlo Valve Assembly With Fittings	1
28	BAC-AF-PB-0153	19 mm (3/4") Pressure Regulator With Gauge	1
29	BAC-AF-PB-0057	19 mm (3/4") Port Moisture Separator	1
30	BAC-PF-PB-0004	19 mm (3/4") Ball Valve	2
31	BAC-PF-PB-0030	6 mm (1/4")-125 PSI Pressure Relief Valve	1
32	BAC-PF-PB-0031	6 mm (1/4") Pressure Gauge - Rear Entry	1
33	BAC-AF-PB-0048	9.5 mm 3/8" Filter Regulator With Gauge	1
34	YAC-PF-PB-0125	1/4" NB Air Hose	2 m
35	YAC-BF-PB-0041	Hose-Air/Water Delivery 19 mmID x 29 mmOD	3 m
36	YAC-CA-PB-0183	Fan Impellor - 360CFM Aluminium	1
37	YAC-CA-PB-0142	230VAC 1PH 50HZ Motor	1
38	BAC-CA-PB-0296	Hinge Assembly	4
39	BAC-DC-0061-00	Pulse Timer 2-10 Stations	1
40	BAC-CA-PB-0141	Cabinet Window Seal	4

## Technical Data



- Optional Turntable Load:**  
250 kg (551 lbs)
- Internal Size:**  
2000 mm (79") Wide 920 mm (36") Deep  
890 mm (35") High
- Door Size:**  
755 mm (30") Wide 855 mm (34") High
- Air Consumption:**  
68 m<sup>3</sup>/hr (40cfm) @550kPa (80 psi)
- Blast Nozzle Size:**  
BAC-NZ-PB-0054  
Nozzle ATN-3S Orifice 3/16" - 4.8mm
- Cabinet Light:**  
4 x 18Watt 230V 50Hz
- Cabinet Overall Dimension:**  
2496 mm (99") Wide 1809 mm (72") Deep  
2681 mm (106") High
- Recommended Floor Area:**  
5600 mm (221") Wide 3000 mm (118") Deep
- Window Size:**  
2 x 750 mm (30") Wide 300 mm (12") High
- Air Supply Line:**  
19 mm (3/4")
- Electrical Power:**  
4Kw (5hp) 415VAC 50Hz 2 Pole 3 Phase

