

## Blast Cabinets

■ Light Duty ■ Heavy Duty ■ Pressure Blast ■ Plastic Media Blast



# PB1000P Blast Cabinets



## Product Features

The PanBlast™ PB1000P Blast Cabinet is a highly efficient, general purpose, industrial blast cabinet, and is compatible with a wide range of abrasive media, including:

- \* FastBlast™ Chilled Iron Grit
- \* QuickCut™ Aluminium Oxide
- \* EnviroGrit™ Garnet
- \* PanaGrit™ Cast Steel Grit
- \* BrightBlast™ Glass Beads
- \* PanaShot™ Steel Shot

- ▶ Up to three times faster than suction blast systems.
- ▶ PanBlast™ 31 litres (1.1 ft³) blast pot.
- ▶ Cyclone type abrasive separator cleans abrasive during use.
- ▶ Safety door interlock.
- ▶ Integral dry cartridge reverse pulse dust collector for clear visibility.
- ▶ Heavy duty wear resistant rubber gloves.
- ▶ Quick-change laminated glass viewing window - no tools required.
- ▶ Fina II abrasive metering valve.
- ▶ Compressed air regulator and gauge.
- ▶ Standard air blow down gun.

## Common Applications

- ▶ De-scale and de-rust metal.
- ▶ Remove paint and coatings.
- ▶ Remove burrs, flashings and sand from castings and moldings.
- ▶ Decorative finishing of non-ferrous metals.
- ▶ Stone and glass etching.
- ▶ Mold cleaning.

## Complementary Products



ATN-S Blast Nozzles



ABN-S Blast Nozzles



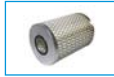
ATN-M Blast Nozzles



AER85 Vacuum Blaster



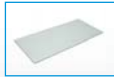
Pow Air Vac



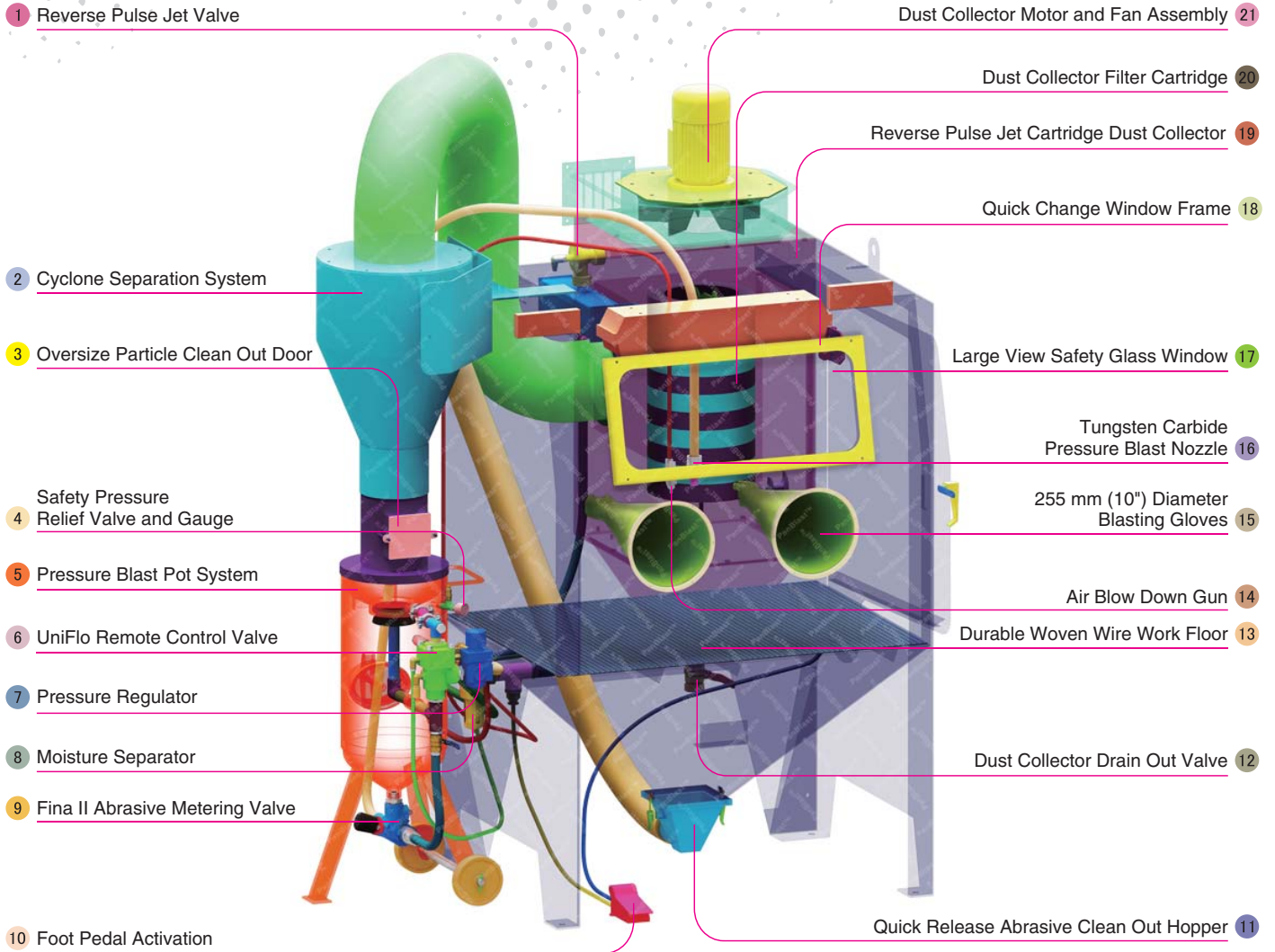
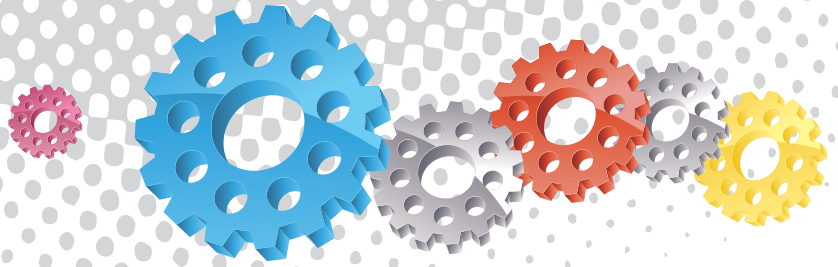
Filter Cartridge



Moisture Separator



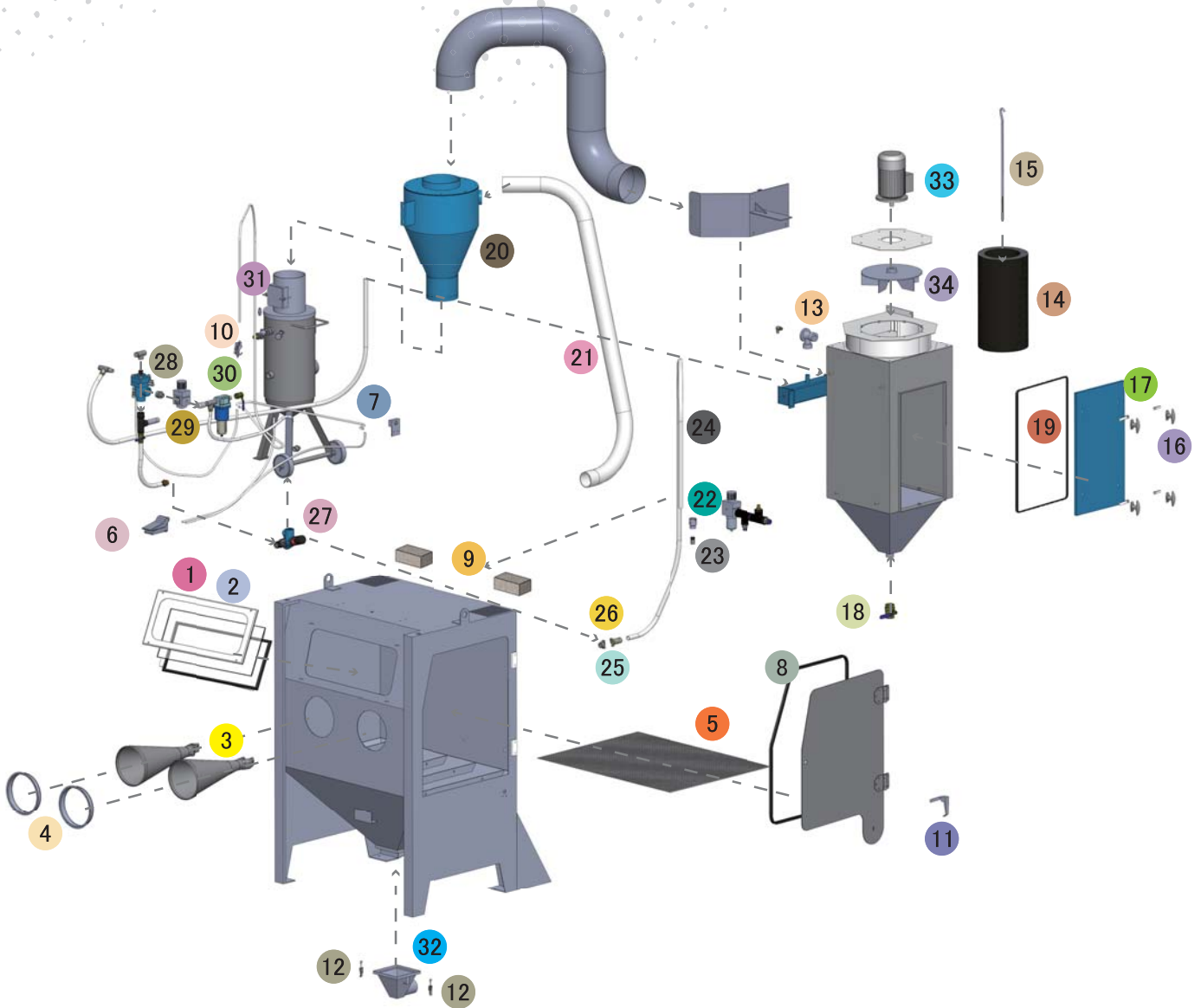
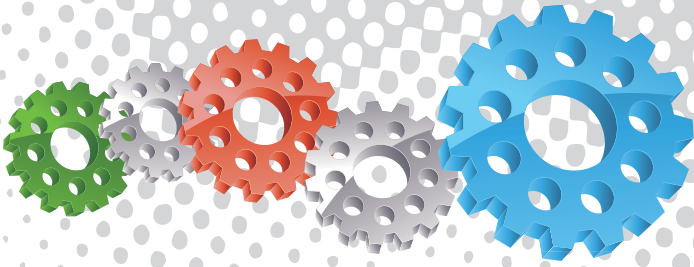
Cabinet Window Cover



## Component Highlights



- |  |  |   |
|--|--|---|
| 1 Reverse Pulse Jet Valve                | 8 Moisture Separator                       | 15 255 mm (10") Diameter Blasting Gloves      |
| 2 Cyclone Separation System              | 9 Fina II Abrasive Metering Valve          | 16 Tungsten Carbide Pressure Blast Nozzle     |
| 3 Oversize Particle Clean Out Door       | 10 Foot Pedal Activation                   | 17 Large View Safety Glass Window             |
| 4 Safety Pressure Relief Valve and Gauge | 11 Quick Release Abrasive Clean Out Hopper | 18 Quick Change Window Frame                  |
| 5 Pressure Blast Pot System              | 12 Dust Collector Drain Out Valve          | 19 Reverse Pulse Jet Cartridge Dust Collector |
| 6 UniFlo Remote Control Valve            | 13 Durable Woven Wire Work Floor           | 20 Dust Collector Filter Cartridge            |
| 7 Pressure Regulator                     | 14 Air Blow Down Gun                       | 21 Dust Collector Motor and Fan Assembly      |



Notation: AU: Approved by Worksafe, Australia. NZ: Approved by Department of Labour, New Zealand. SG: Approved by Ministry of Manpower, Singapore.

## Assemblies

Stock Code	Description	Weight
BEC-CA-PB-0009	PB1000P/AU/NZ Pressure Cabinet Assembly	600 kg (1322 lbs)
BEC-CA-0565-00	PB1000P/SG Pressure Cabinet Assembly	600 kg (1322 lbs)

## Optional Accessories

Stock Code	Description	Stock Code	Description
BAC-CA-PB-0180	PB1000 Cabinet Track & Turntable	BAC-CA-PB-0243	Tumble Basket Assembly - 350 mm Dia
BAC-CA-PB-0244	PB1000/1500/2000 Turntable Kit	BAC-CA-PB-0040	Tumble Basket Assembly - 300 mm Dia
BAC-CA-PB-0277	Cabinet Gun Stand	BAC-CA-PB-0455	Foot Valve Guard
BAC-CA-PB-0278	PB1000 Lining Kit	BAC-CA-PB-0292	Operator Sound Kit
BAC-CA-PB-0241	Silencer Kit	BAC-DC-0002-01	230V 1-Cartridge Auto-Reverse Pulse Kit



## Parts List

Item	Stock Code	Description	Qty
1	BAC-CA-PB-0137	Rectangular Window	1
2	BAC-CA-PB-0141	Cabinet Window Seal	2
3	BAC-GL-PB-0003	10" Ø Cabinet Rubber Gloves	1 pr
4	BAC-CA-PB-0157	Cabinet Entry Ring	2
5	BAC-CA-PB-0126	Cabinet Floor Mesh	1
6	BAC-CA-PB-0086	Foot Valve Spring Return	1
7	YAC-CA-PB-0219	Door Interlock Valve	1
8	BAC-CA-PB-0178	Cabinet Door Seal	1
9	BAC-CA-PB-0140	Air Entry Filter	2
10	YAC-CA-PB-0145	1/4" Blow Off Gun	1
11	YAC-CA-PB-0138	Latch	1
12	YAC-FN-PB-0041	Toggle Catch	2
13	BAC-DC-PB-0007	Pulse Valve	1
14	BAC-DF-PB-0002	Filter Cartridge - Size 2 (Open/Close)	1
15	YAC-DC-PB-0005	700 mm Hanger Rod	1
16	YAC-CA-PB-0146	Handle	4
17	YAC-CA-PB-0205	Handle Tongue	4
18	BAC-PF-PB-0008	38 mm (1-1/2") Ball Valve	1
19	YAC-CA-PB-0375	Dust Collector Door Seal	0.6 m
20	BAC-CA-0281-04	Rubber Lined Cyclone	1
21	BAC-CA-0597-00	Recovery Hose	1
22	BAC-NZ-PB-0025	ANH-1/2 Aluminium Nozzle Holder	1
23	BAC-NZ-PB-0054	Blast Nozzle ATN-3s Alum/Tungsten Short	1
24	BAC-HB-PB-0002	Blast Hose 19mm X 34mm X 20mm L2	2.5 m
25	BAC-HC-0090-00	SHC-1/2 Steel Hose Coupling	1
26	BAC-HC-0086-00	STC-1/2 Steel Threaded Pot Coupling	1
27	BAC-VA-0397-00	Fina II Valve 1/2"M x 3/4"F	1
28	BAC-RC-PB-0086	UniFlo Remote Control Valve	1
29	BAC-AF-PB-0153	19 mm (3/4") Pressure Regulator With Gauge	1
30	BAC-PF-PB-0004	19 mm (3/4") Ball Valve	1
31	BAC-PF-PB-0030	6 mm (1/4") - 125 psi Pressure Relief Valve	1
32	YAC-CA-PB-0226	Spigot	1
33	YAC-CA-PB-0144	1.5kw 415v/50hz Motor	1
34	YAC-CA-PB-0183	Fan Impellor - 360cfm Aluminium	1

## Technical Data



- Optional Turntable Load:**  
250 kg (551 lbs)
- Internal Size:**  
1100 mm (43") Wide 920 mm (36") Deep  
890 mm (35") High
- Door Size:**  
755 mm (30") Wide 855 mm (34") High
- Air Consumption:**  
85 m<sup>3</sup>/hr (50cfm) @ 550 kPa (80 psi)
- Blast Nozzle Size:**  
BAC-NZ-PB-0054  
Nozzle ATN-3S Orifice 3/16" - 4.8 mm
- Cabinet Light:**  
2 x 18Watt 230V 50Hz
- Cabinet Overall Dimension:**  
1830 mm (72") Wide 1573 mm (62") Deep  
2400 mm (95") High
- Recommended Floor Area:**  
3400 mm (134") Wide 2400 mm (95") Deep
- Window Size:**  
750 mm (30") Wide 300 mm (12") High
- Air Supply Line:**  
19 mm (3/4")
- Electrical Power:**  
1.5Kw (2 hp) 415VAC 50Hz 2 Pole 3 Phase

