

## Blast Cabinets

■ Light Duty ■ Heavy Duty ■ Pressure Blast ■ Plastic Media Blast



# PB1000HD Blast Cabinet



## Product Features

The PanBlast™ PB1000HD Heavy Duty Suction Blast Cabinet is a highly efficient, general purpose, industrial blast cabinet, compatible with a wide range of abrasive media, including:

- \* FastBlast™ Chilled Iron Grit
- \* PanaGrit™ Cast Steel Grit
- \* QuickCut™ Aluminium Oxide
- \* BrightBlast™ Glass Beads
- \* EnviroGrit™ Garnet

- ▶ Cyclone type abrasive separator cleans the abrasive during use.
- ▶ Safety door interlock.
- ▶ Integral dry cartridge reverse pulse dust collector for clear visibility.
- ▶ Heavy duty, wear resistant rubber gloves.
- ▶ Quick-change laminated glass viewing window - no tools required.
- ▶ Fully adjustable abrasive feed tee.
- ▶ Compressed air regulator and gauge.
- ▶ High performance PanBlast™ Delta Suction Gun.
- ▶ Air blow down gun standard.

## Common Applications

- ▶ De-scale and de-rust metal.
- ▶ Remove paint and coatings.
- ▶ Remove burrs, flashings and sand from castings and moldings.
- ▶ Decorative finishing of non-ferrous metals.
- ▶ Stone and glass etching.
- ▶ Mold cleaning.

## Complementary Products



Delta GDF Manual Blast Gun



Delta SNH Auto Blast Gun



Cabinet Gun Stand



Moisture Separator



Pow Air Vac



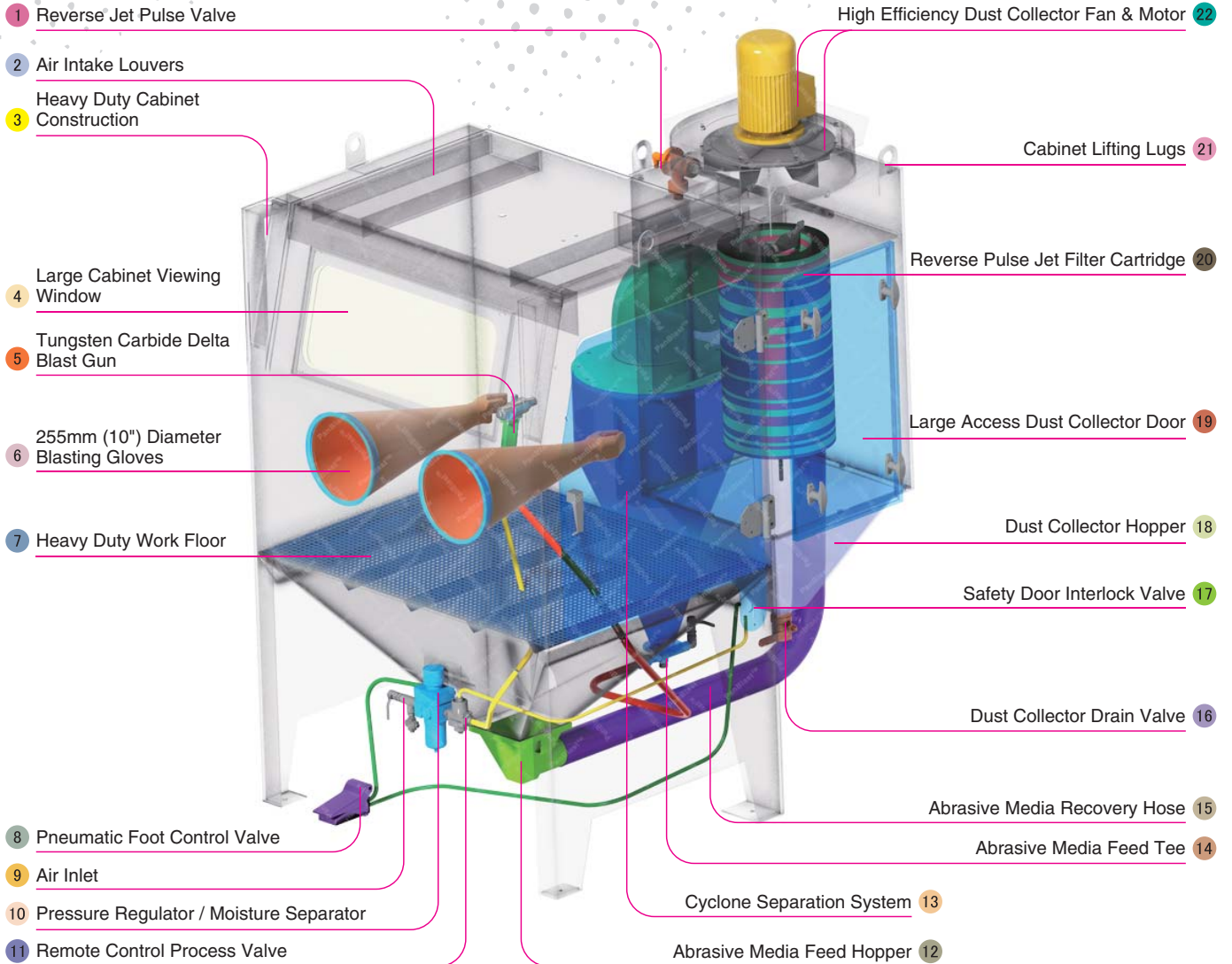
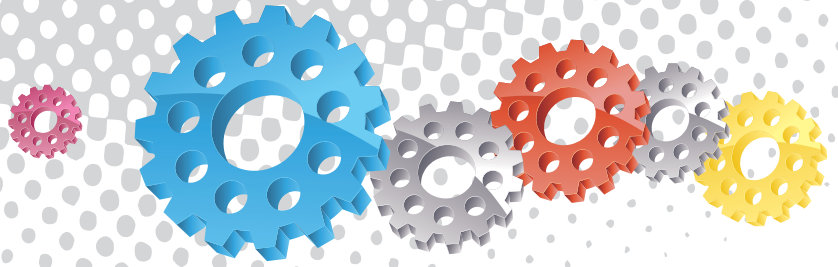
Dust Collector Silencer



Track & Turntable



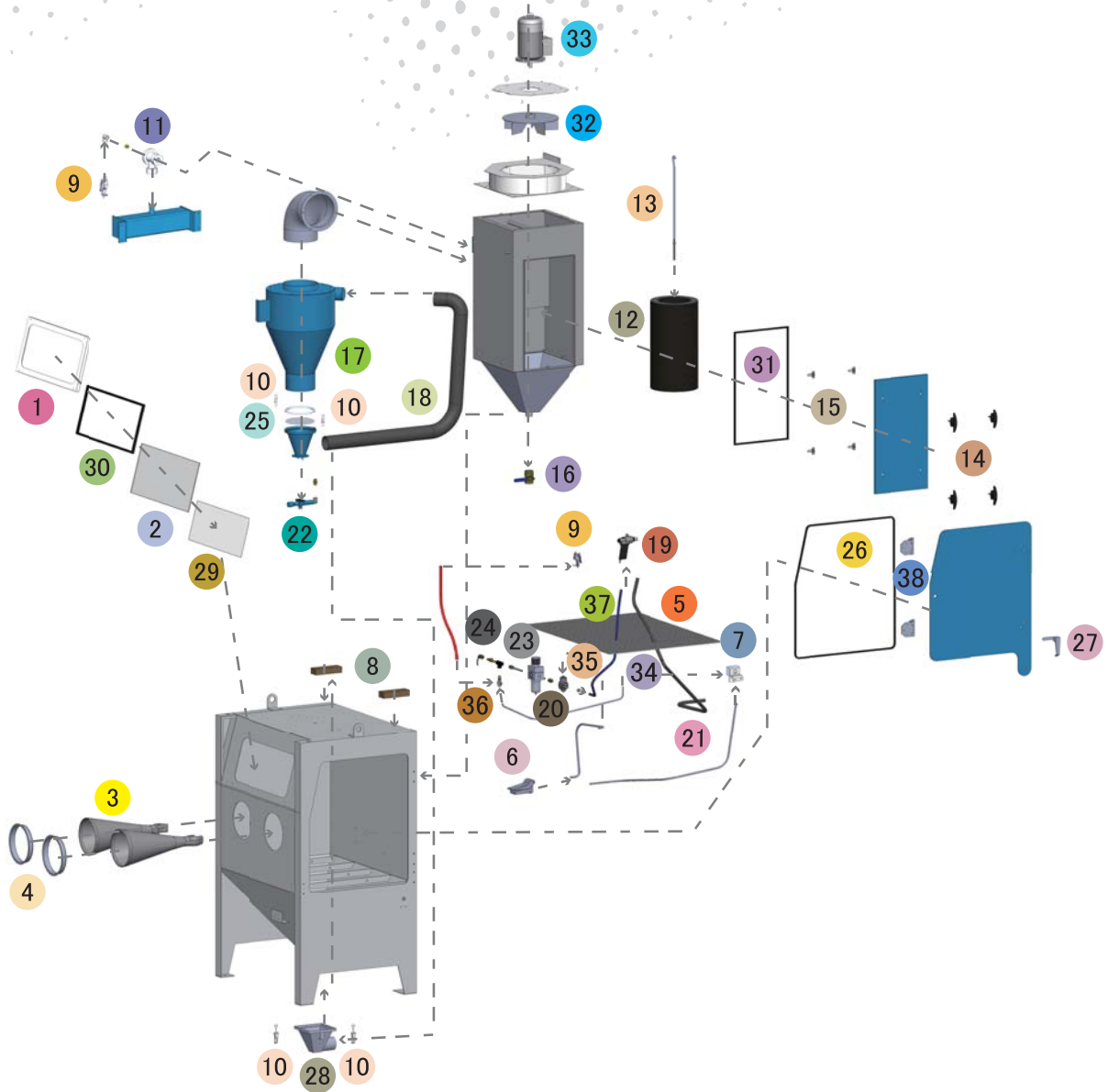
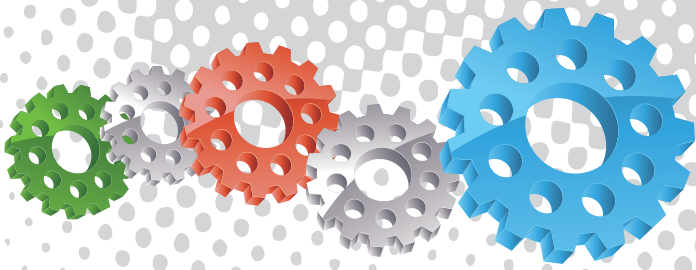
Tumble Basket



## Component Highlights



- |  |  |   |
|--|--|---|
| 1 Reverse Jet Pulse Valve              | 9 Air Inlet                                | 17 Safety Door Interlock Valve                |
| 2 Air Intake Louvers                   | 10 Pressure Regulator / Moisture Separator | 18 Dust Collector Hopper                      |
| 3 Heavy Duty Cabinet Construction      | 11 Remote Control Process Valve            | 19 Large Access Dust Collector Door           |
| 4 Large Cabinet Viewing Window         | 12 Abrasive Media Feed Hopper              | 20 Reverse Pulse Jet Filter Cartridge         |
| 5 Tungsten Carbide Delta Blast Gun     | 13 Cyclone Separation System               | 21 Cabinet Lifting Lugs                       |
| 6 255mm (10") Diameter Blasting Gloves | 14 Abrasive Media Feed Tee                 | 22 High Efficiency Dust Collector Fan & Motor |
| 7 Heavy Duty Work Floor                | 15 Abrasive Media Recovery Hose            |   |
| 8 Pneumatic Foot Control Valve         | 16 Dust Collector Drain Valve              |   |



## Assembly

Stock Code	Description	Weight
BEC-CA-0002-02	PB1000HD Blast Cabinet Assembly	520 kg (1146 lbs)

## Optional Accessories

Stock Code	Description	Stock Code	Description
BAC-CA-PB-0180	PB1000 Cabinet Track & Turntable	BAC-CA-PB-0040	Tumble Basket Assembly - 300 mm DIA
BAC-CA-PB-0244	PB1000/1500/2000 Turntable Kit	BAC-CA-PB-0455	Foot Valve Guard
BAC-CA-PB-0277	Cabinet Gun Stand	BAC-CA-PB-0292	Operator Sound Kit
BAC-CA-PB-0241	Silencer Kit	BAC-CA-PB-0278	PB1000 Lining Kit
BAC-CA-PB-0243	Tumble Basket Assembly - 350 mm DIA	BAC-DC-0002-01	230V 1- Cartridge Auto - Reverse Pulse Kit



All data and information subject to change without prior notice. Brochure reference CAT-0602-02-01

## Parts List

Item	Stock Code	Description	Qty
1	YAC-CA-PB-0101	Window Frame	1
2	BAC-CA-PB-0137	Rectangular Window	1
3	BAC-GL-PB-0003	10" Ø Cabinet Rubber Gloves	1 pr
4	BAC-CA-PB-0157	Cabinet Entry Ring	2
5	BAC-CA-PB-0126	Cabinet Floor Mesh	1
6	BAC-CA-PB-0086	Foot Valve Spring Return	1
7	YAC-CA-PB-0219	Door Interlock Valve	1
8	BAC-CA-PB-0140	Air Entry Filter	2
9	YAC-CA-PB-0145	1/4" Blow Off Gun	2
10	YAC-FN-PB-0041	Toggle Catch	4
11	BAC-DC-PB-0007	Pulse Valve	1
12	BAC-DF-PB-0002	Filter Cartridge - Size 2 (Open/Close)	1
13	YAC-DC-PB-0005	700mm Hanger Rod	1
14	YAC-CA-PB-0146	Handle	4
15	YAC-CA-PB-0205	Handle Tongue	4
16	BAC-PF-PB-0008	38 mm (1-1/2") Ball Valve	1
17	BAC-CA-0281-04	Rubber Lined Cyclone	1
18	BAC-CA-PB-0322	Recovery Hose	1
19	BAC-BG-PB-0057	Delta-m Gun GDF 3/16 X 3/8 Assembly	1
20	BAC-RC-PB-0142	Sola5 Inlet Valve Sub Assembly	1
21	BAC-CA-0588-00	Abrasive Hose	1
22	BAC-CA-PB-0220	Feed Tee Assembly	1
23	BAC-AF-PB-0047	13 mm (1/2") Filter Regulator With Gauge	1
24	BAC-PF-PB-0001	13 mm (1/2") Ball Valve	1
25	BAC-CA-0353-00	Standard Cyclone Screen Seal	1
26	BAC-CA-PB-0178	Cabinet Door Seal	1
27	YAC-CA-PB-0138	Latch	1
28	YAC-CA-PB-0226	Spigot	1
29	BAC-CA-PB-0392	720 X 270 Window Cover - 5 pcs	1
30	BAC-CA-PB-0141	Cabinet Window Seal	1
31	BAC-CA-PB-0406	Dust Collector Door Seal	1
32	YAC-CA-PB-0183	Fan Impellor – 360cfm Aluminium	1
33	YAC-CA-PB-0144	1.5 kw 415 v/50 hz Motor	1
34	BAC-CA-PB-0135	Rubber Sealing Grommet	1
35	YAC-CA-PB-0423	16 mm Grommet	1
36	YAC-CA-0477-00	Grommet	1
37	BAC-AF-PB-0164	Air Hose 10 mm 250 psi Impact Blue	2 m
38	BAC-CA-PB-0296	Hinge Assembly	2

## Technical Data



- **Optional Turntable Load:**  
250 kg (551 lbs)
- **Internal Size:**  
1100 mm (43") Wide 920 mm (36") Deep  
890 mm (35") High
- **Door Size:**  
755 mm (30") Wide 855 mm (34") High
- **Air Consumption:**  
85 m<sup>3</sup>/hr (50 cfm) @550kPa (80 psi)
- **Suction Gun / Nozzle Size:**  
BAC-BG-PB-0057 Delta Manual Gun 3/16" x 3/8"
- **Cabinet Light:**  
2 x 18Watt 230V 50Hz
- **Cabinet Overall Dimension:**  
1300 mm (52") Wide 1625 mm (64") Deep  
2220 mm (88") High
- **Recommended Floor Area:**  
2900 mm (114") Wide 2400 mm (95") Deep
- **Window Size:**  
750 mm (30") Wide 300 mm (12") High
- **Air Supply Line:**  
13 mm (1/2")
- **Electrical Power:**  
1.5Kw (2 hp) 415VAC 50Hz 2 Pole 3 Phase

