

## Blast Cabinets

■ Light Duty ■ Heavy Duty ■ Pressure Blast ■ Plastic Media Blast



# PB1000SP Blast Cabinet



## Product Features

The PanBlast™ PB1000SP Suction Blast Cabinet is an economical, mid-sized suction blast cabinet, ideally suited for low-to-medium volume production blasting applications with upgraded operator visibility and cleaning convenience from the reverse pulse jet dust collector providing cabinet ventilation. It is usable with a wide range of media, including:

- FastBlast™ Chilled Iron Grit.
- QuickCut™ Aluminium Oxide.
- EnviroGrit™ Garnet.
- PanaGrit™ Cast Steel Grit.
- BrightBlast™ Glass Beads.

- ▶ Safety door interlock.
- ▶ Integral dry cartridge reverse pulse dust collector maintains clear visibility.
- ▶ Heavy duty wear resistant rubber gloves.
- ▶ Quick-change laminated glass viewing window - no tools required.
- ▶ Fully adjustable abrasive feed.
- ▶ Compressed air regulator and gauge.
- ▶ High performance PanBlast™ Delta Suction Gun.
- ▶ Standard air blow down gun.

## Common Applications

- ▶ De-scale and de-rust metal.
- ▶ Remove paint and coatings.
- ▶ Remove burrs, flashings and sand from castings and moldings.
- ▶ Decorative finishing of non-ferrous metals.
- ▶ Stone and glass etching.
- ▶ Mold cleaning.

## Complementary Products



Delta GDF Manual Blast Gun



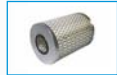
Delta GDF Auto Blast Gun



Delta SNH Manual Blast Gun



Delta SNH Auto Blast Gun



Filter Cartridge



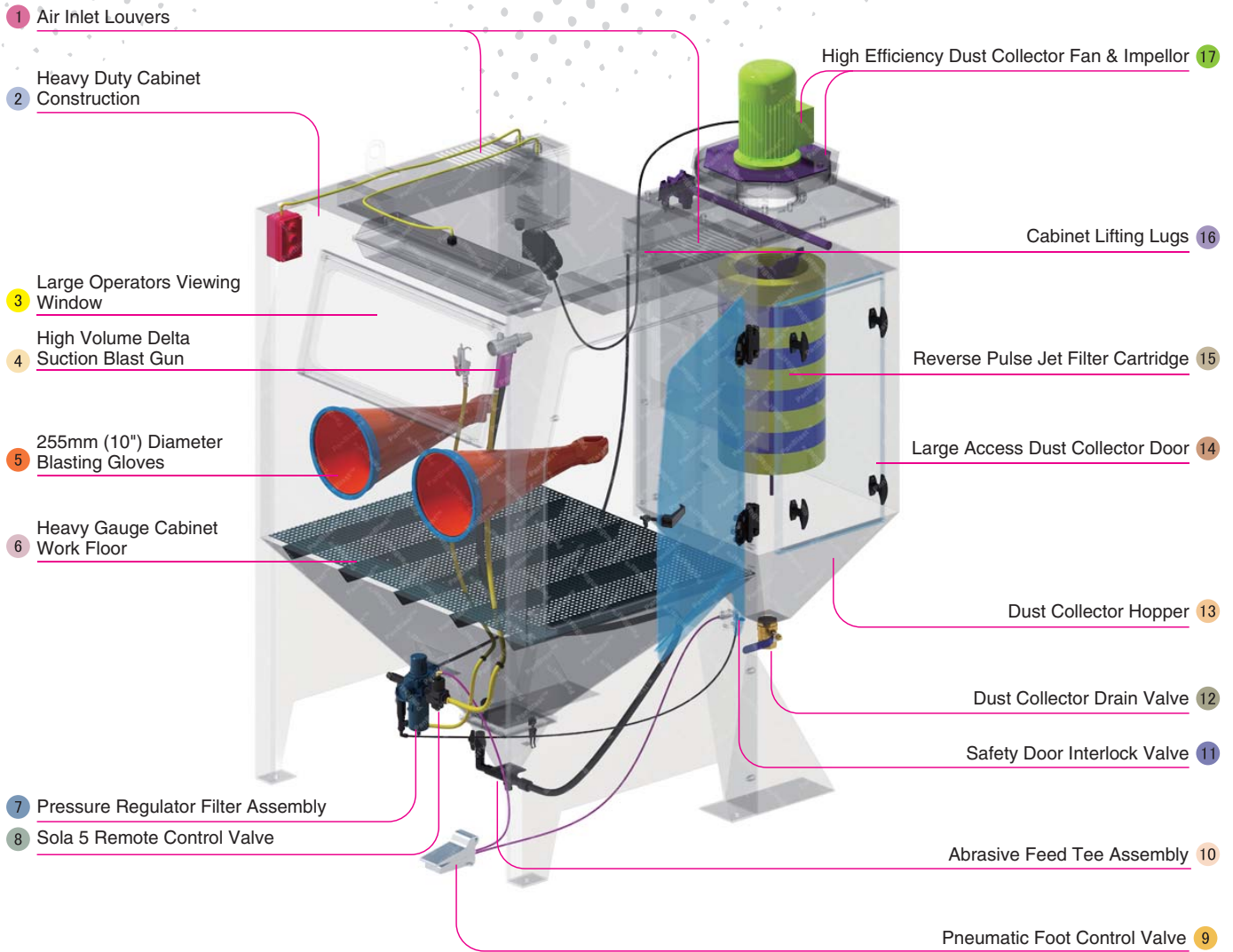
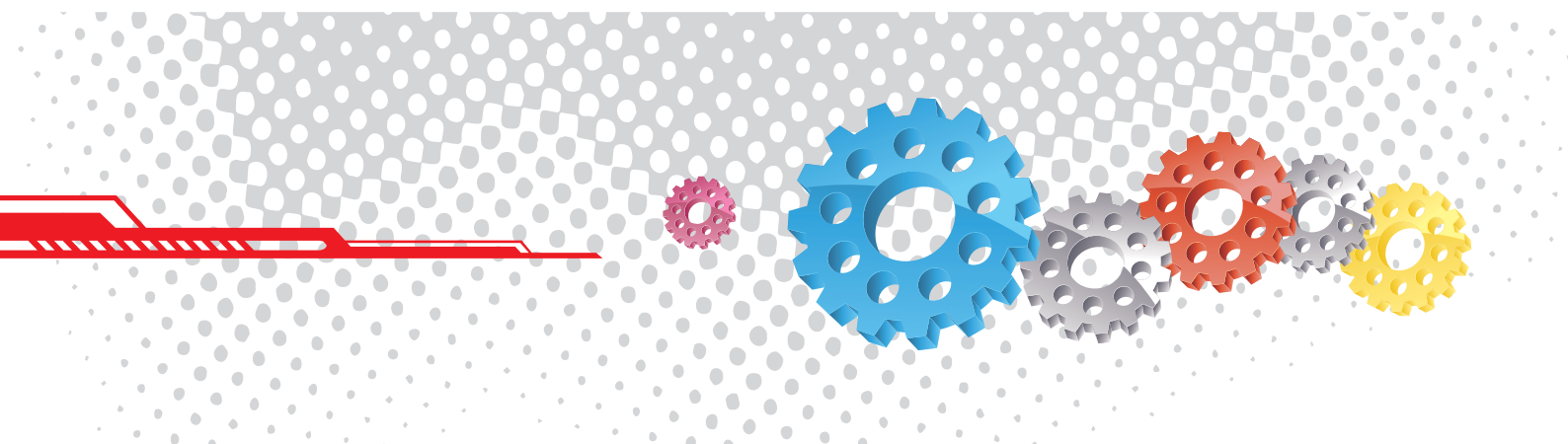
Moisture Separator



Cabinet Window Cover



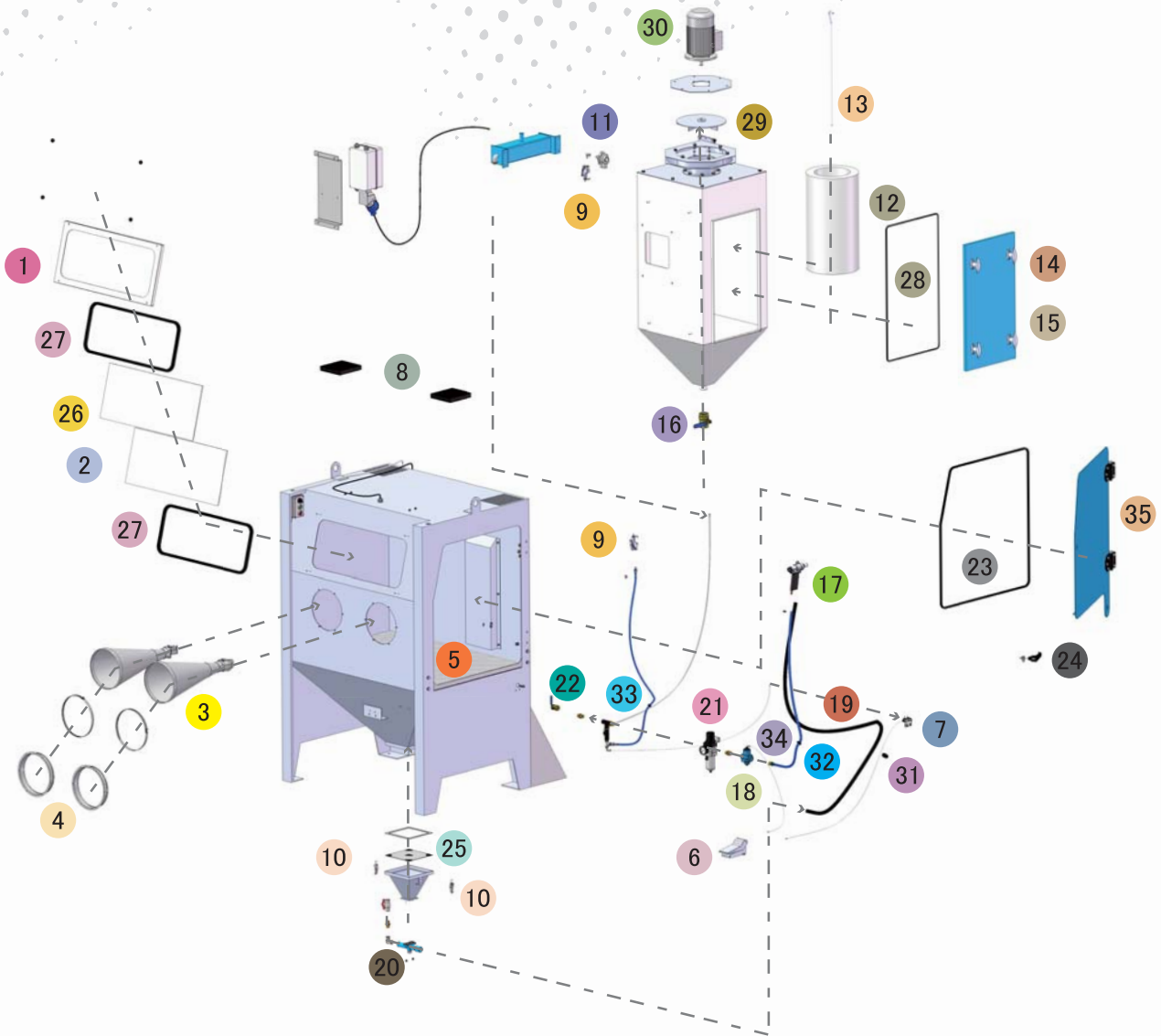
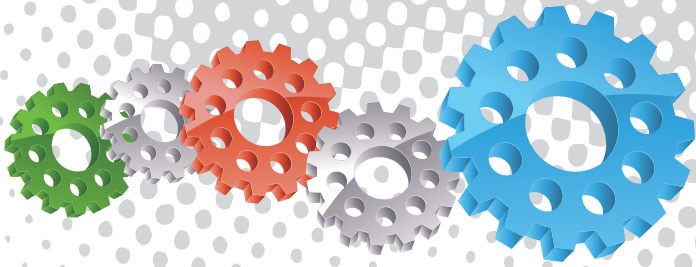
Pow Air Vac



## Component Highlights



- |   |                                      |  |
|---|--------------------------------------|--|
| 1 Air Inlet Louvers                     | 7 Pressure Regulator Filter Assembly | 13 Dust Collector Hopper                         |
| 2 Heavy Duty Cabinet Construction       | 8 Sola 5 Remote Control Valve        | 14 Large Access Dust Collector Door              |
| 3 Large Operators Viewing Window        | 9 Pneumatic Foot Control Valve       | 15 Reverse Pulse Jet Filter Cartridge            |
| 4 High Volume Delta Suction Blast Gun   | 10 Abrasive Feed Tee Assembly        | 16 Cabinet Lifting Lugs                          |
| 5 255 mm (10") Diameter Blasting Gloves | 11 Safety Door Interlock Valve       | 17 High Efficiency Dust Collector Fan & Impellor |
| 6 Heavy Gauge Cabinet Work Floor        | 12 Dust Collector Drain Valve        |  |



## Assembly

| Stock Code     | Description                     | Weight            |
|----------------|---------------------------------|-------------------|
| BEC-CA-PB-0001 | PB1000SP Blast Cabinet Assembly | 485 kg (1069 lbs) |

## Optional Accessories

| Stock Code     | Description                    | Stock Code     | Description                             |
|----------------|--------------------------------|----------------|---|
| BAC-CA-PB-0180 | Track & Trolley                | BAC-CA-PB-0040 | Tumble Basket Ø300 mm x 325 mm          |
| BAC-CA-PB-0244 | Fixed Turntable Kit            | BAC-CA-PB-0455 | Foot Valve Guard                        |
| BAC-CA-PB-0277 | Cabinet Gun Stand              | BAC-CA-PB-0292 | Operator Sound Kit                      |
| BAC-CA-PB-0241 | Dust Collector Silencer Kit    | BAC-CA-PB-0278 | Rubber Lined Cabinet                    |
| BAC-CA-PB-0243 | Tumble Basket Ø350 mm x 375 mm | BAC-DC-0002-01 | Single Cartridge Auto-Reverse Pulse Kit |



## Parts List

| Item | Stock Code     | Description                              | Qty   |
|------|----------------|--|-------|
| 1    | YAC-CA-PB-0101 | Window Frame                             | 1     |
| 2    | BAC-CA-PB-0137 | Rectangular Window                       | 1     |
| 3    | BAC-GL-PB-0003 | 10" Ø Cabinet Rubber Gloves              | 1 pr  |
| 4    | BAC-CA-PB-0157 | Cabinet Entry Ring                       | 2     |
| 5    | BAC-CA-PB-0126 | Cabinet Floor Mesh                       | 1     |
| 6    | BAC-CA-PB-0086 | Foot Valve Spring Return                 | 1     |
| 7    | YAC-CA-PB-0219 | Door Interlock Valve                     | 1     |
| 8    | BAC-CA-PB-0140 | Air Entry Filter                         | 2     |
| 9    | YAC-CA-PB-0145 | 1/4" Blow Off Gun                        | 2     |
| 10   | YAC-FN-PB-0041 | Toggle Catch                             | 2     |
| 11   | BAC-DC-PB-0007 | Pulse Valve                              | 1     |
| 12   | BAC-DF-PB-0002 | Filter Cartridge - Size 2                | 1     |
| 13   | BAC-DC-PB-0031 | Hanger Rod                               | 1     |
| 14   | YAC-CA-PB-0146 | Handle                                   | 4     |
| 15   | YAC-CA-PB-0205 | Handle Tongue                            | 4     |
| 16   | BAC-PF-PB-0008 | 38 mm (1-1/2") Ball Valve                | 1     |
| 17   | BAC-BG-PB-0056 | Delta-M Gun GDF 1/8 X 1/4 Assembly       | 1     |
| 18   | BAC-RC-PB-0142 | Sola5 Inlet Valve Sub Assembly           | 1     |
| 19   | BAC-CA-0587-00 | Abrasives Hose                           | 1     |
| 20   | BAC-CA-PB-0220 | Feed Tee Assembly                        | 1     |
| 21   | BAC-AF-PB-0047 | 13 mm (1/2") Filter Regulator With Gauge | 1     |
| 22   | BAC-PF-PB-0001 | 13 mm (1/2") Ball Valve                  | 1     |
| 23   | BAC-CA-PB-0178 | Cabinet Door Seal                        | 1     |
| 24   | YAC-CA-PB-0138 | Latch                                    | 1     |
| 25   | BAC-CA-PB-0117 | PB500/PB1000 Hopper-Screen Detail        | 1     |
| 26   | BAC-CA-PB-0392 | 720 X 270 Window Cover – 5pcs            | 1     |
| 27   | BAC-CA-PB-0141 | Cabinet Window Seal                      | 2     |
| 28   | BAC-CA-PB-0406 | Dust Collector Door Seal                 | 1     |
| 29   | YAC-CA-PB-0184 | Fan Impellor – 240 CFM Aluminium         | 1     |
| 30   | YAC-CA-PB-0142 | 230VAC 1PH 50HZ Motor                    | 1     |
| 31   | BAC-CA-PB-0135 | Rubber Sealing Grommet                   | 1     |
| 32   | YAC-CA-PB-0423 | 16 mm Grommet                            | 1     |
| 33   | YAC-CA-0477-00 | Grommet                                  | 1     |
| 34   | BAC-AF-PB-0164 | Air Hose 10 mm 250psi Impact Blue        | 1.5 m |
| 35   | BAC-CA-PB-0296 | Hinge Assembly                           | 2     |

## Technical Data



- Optional Turntable Load:**  
250 kg (551 lbs)
- Internal Size:**  
1100 mm (43") Wide 920 mm (36") Deep  
890 mm (35") High
- Door Size:**  
755 mm (30") Wide 855 mm (34") High
- Air Consumption:**  
36 m³/hr (21cfm) @550 kPa (80 psi)
- Suction Gun / Nozzle Size:**  
BAC-BG-PB-0056 Delta Manual Gun 1/8" x 1/4"
- Cabinet Light:**  
2 x 18Watt 230V 50Hz
- Cabinet Overall Dimension:**  
1300 mm (52") Wide 1470 mm (58") Deep  
2220 mm (88") High
- Recommended Floor Area:**  
2900 mm (114") Wide 2400 mm (95") Deep
- Window Size:**  
750 mm (30") Wide 300 mm (12") High
- Air Supply Line:**  
10 mm (3/8")
- Electrical Power:**  
0.55Kw (0.75hp) 230VAC 50Hz 2 Pole 1 Phase

