

## Blast Cabinets

■ Light Duty ■ Heavy Duty ■ Pressure Blast ■ Plastic Media Blast



# CS34 Blast Cabinets



## Product Features

The PanBlast™ CS34 Blast Cabinet is an economical, light duty, suction blast cabinet. It is ideally suited for low production volume applications. Recommended abrasive types for the CS34 include:

- \*QuickCut™ Aluminium Oxide
- \*BrightBlast™ Glass Beads
- \*EnviroGrit™ Garnet

- ▶ High performance trigger activated suction blast gun assembly.
- ▶ 3 mm (1/8") air tip with 6 mm (1/4") ceramic blast nozzle.
- ▶ Single molded access door.
- ▶ Extra large, 575 mm (22.6") x 265 mm (10.4") operator viewing window.
- ▶ Tear-off viewing window covers.

## Common Applications

- ▶ De-scale and de-rust metal surfaces.
- ▶ Remove paint and powder coating.
- ▶ Deburr and deflash castings and moldings.
- ▶ Decorative finishing of non-ferrous metals.
- ▶ Stone and glass etching.

## Complementary Products



Delta SNH Manual Blast Gun



Delta SNH Auto Blast Gun



PB500HD Blast Cabinet



PB500ES Blast Cabinet



PB1000HD Blast Cabinet



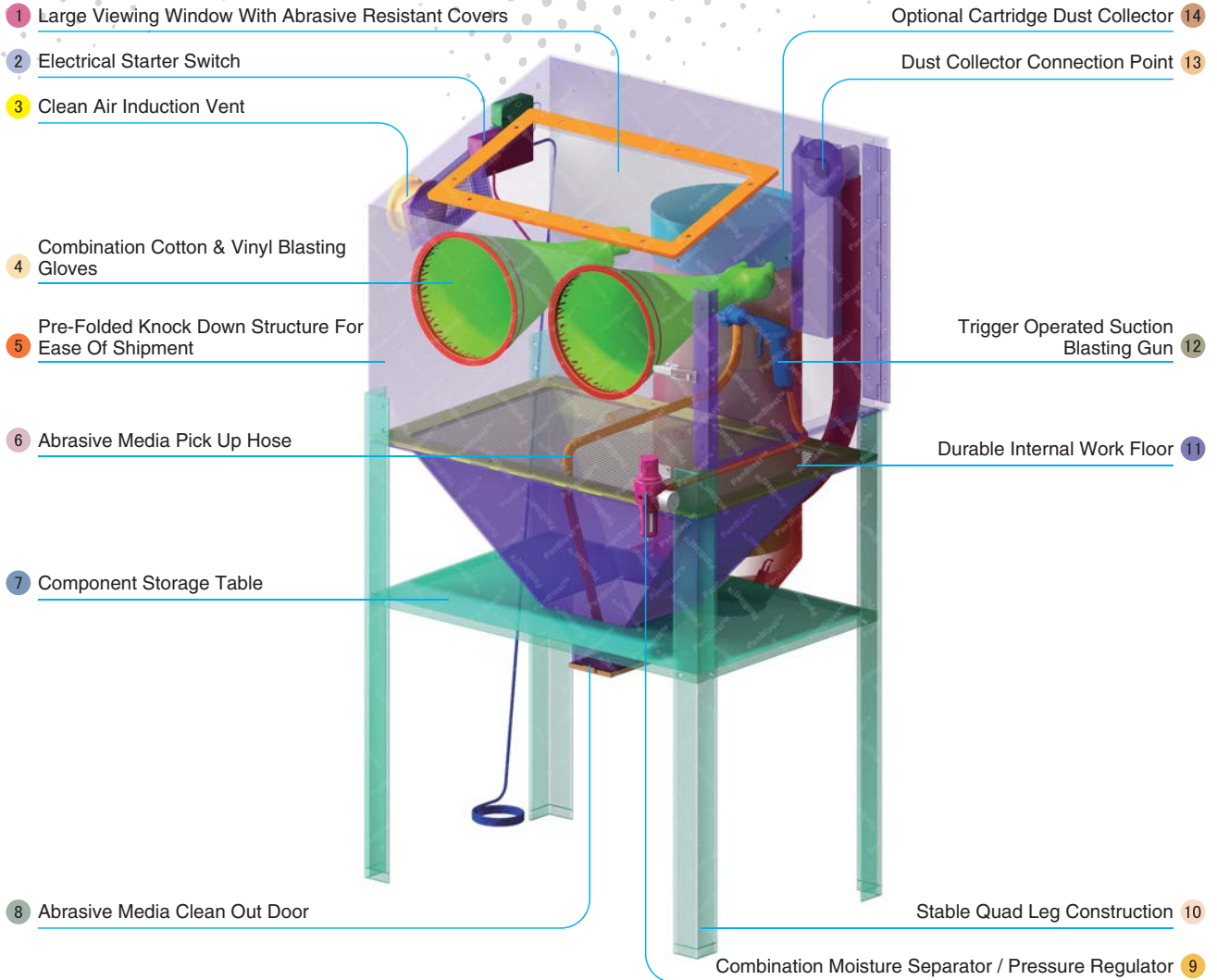
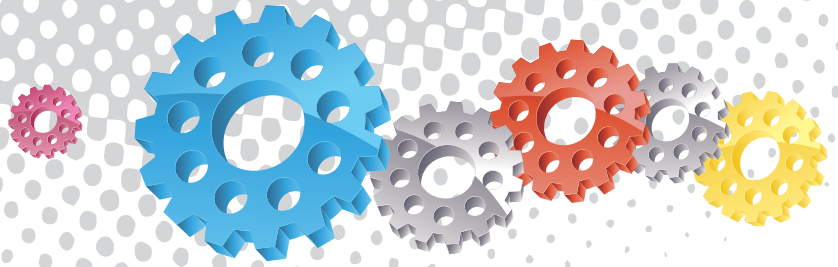
CS37 Blast Cabinet



PB1000P Blast Cabinet



PB1500HD Blast Cabinet

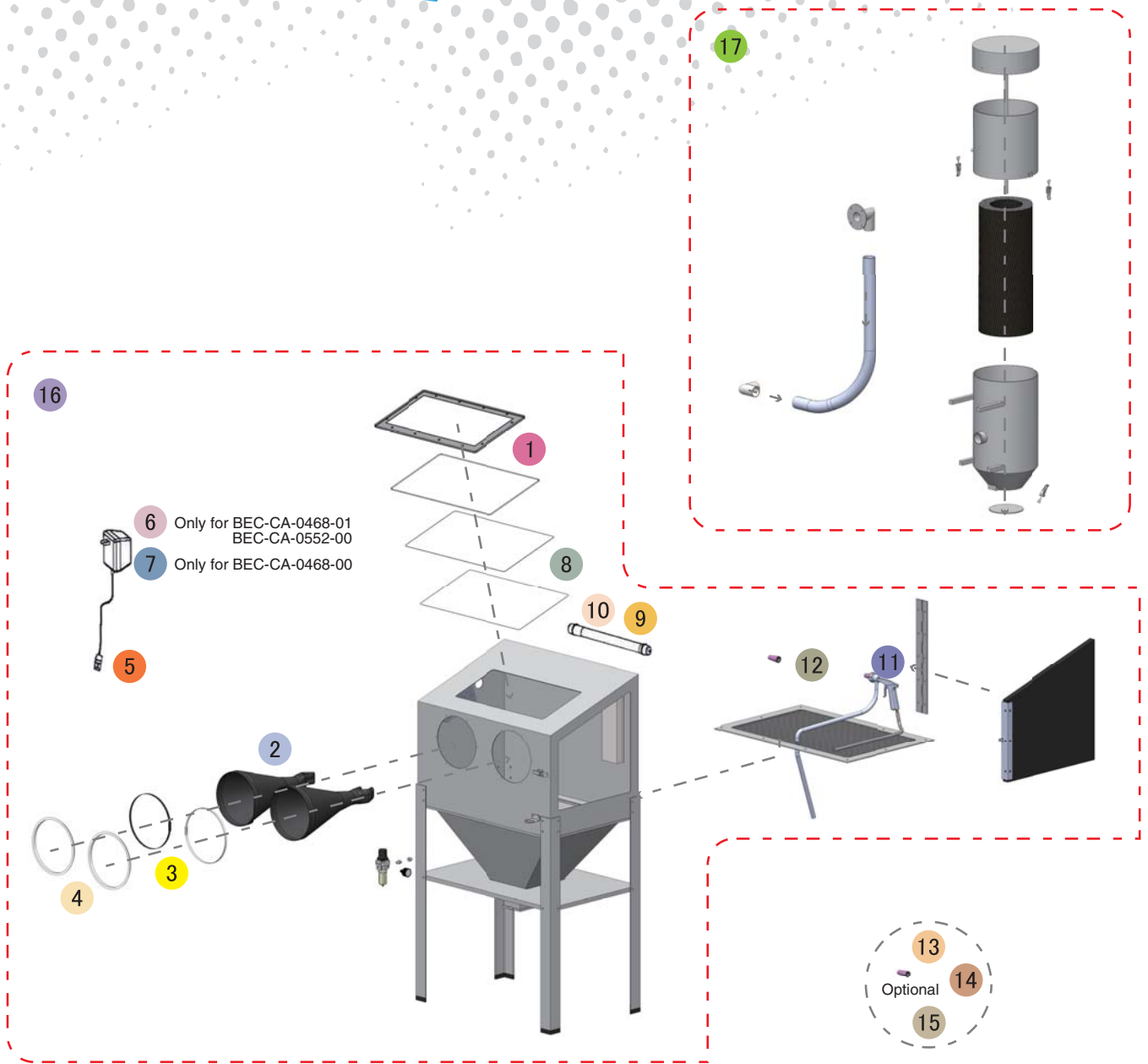
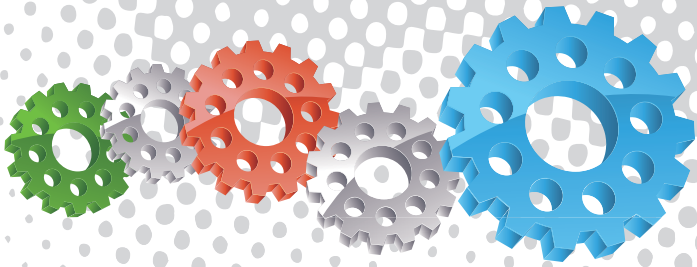


- 1 Large Viewing Window With Abrasive Resistant Covers
- 2 Electrical Starter Switch
- 3 Clean Air Induction Vent
- 4 Combination Cotton & Vinyl Blasting Gloves
- 5 Pre-Folded Knock Down Structure For Ease Of Shipment
- 6 Abrasive Media Pick Up Hose
- 7 Component Storage Table
- 8 Abrasive Media Clean Out Door
- 9 Combination Moisture Separator / Pressure Regulator
- 10 Stable Quad Leg Construction
- 11 Durable Internal Work Floor
- 12 Trigger Operated Suction Blasting Gun
- 13 Dust Collector Connection Point
- 14 Optional Cartridge Dust Collector

## Component Highlights



- 1 Large Viewing Window With Abrasive Resistant Covers
- 2 Electrical Starter Switch
- 3 Clean Air Induction Vent
- 4 Combination Cotton & Vinyl Blasting Gloves
- 5 Pre-Folded Knock Down Structure For Ease Of Shipment
- 6 Abrasive Media Pick Up Hose
- 7 Component Storage Table
- 8 Abrasive Media Clean Out Door
- 9 Combination Moisture Separator / Pressure Regulator
- 10 Stable Quad Leg Construction
- 11 Durable Internal Work Floor
- 12 Trigger Operated Suction Blasting Gun
- 13 Dust Collector Connection Point
- 14 Optional Cartridge Dust Collector



## Assemblies

Stock Code	Description	Weight	Include Items
BEC-CA-0468-00	CS34 Blast Cabinet - 110VAC	48 kg (105.8 lbs)	16
BEC-CA-0468-01	CS34 Blast Cabinet - 230VAC	48 kg (105.8 lbs)	16
BEC-CA-0552-00	CS34 Blast Cabinet w/Dust Collector - 230VAC	60 kg (132.3 lbs)	16 17

## Optional Accessories

Stock Code	Description	Include Items
BAC-NZ-0506-00	4 mm Ceramic Nozzle – CS34	13
BAC-NZ-0508-00	6 mm Ceramic Nozzle – CS34	14
BAC-NZ-0509-00	7 mm Ceramic Nozzle – CS34	15
BAC-CA-0510-00	230VAC Dust Collector Assembly Kit	17
BAC-DC-0037-01	Dust Collector Motor - 230VAC/1KW CE	



All data and information subject to change without prior notice. Brochure reference CAT-0601-01-00

## Parts List

Item	Stock Code	Description	Qty
1	BAC-CA-0481-00	Glass Window	1
2	BAC-GL-0006-00	Cabinet Gloves	1 pr
3	BAC-CA-0480-00	Glove Clamps	2
4	BAC-CA-0513-00	Glove Entry Ring	2
5	YAC-CA-0499-00	Plug	1
6	BAC-CA-0497-00	230VAC Power Supply Transformer	1
7	BAC-CA-0498-00	110VAC Power Supply Transformer	1
8	BAC-CA-0482-00	Window Cover	1
9	BAC-CA-0500-00	Cabinet Light	1
10	YAC-CA-0496-00	Light Clamp	2
11	BAC-BG-0098-00	CS Trigger Gun Less Nozzle	1
12	BAC-NZ-0507-00	5 mm Ceramic Nozzle – CS34	1

## Technical Data



- **Shipping Size:**  
960 mm (38") Wide 620 mm (24") Deep  
615 mm (24") High
- **Internal Size:**  
838 mm (33") Wide 558 mm (22") Deep  
546 mm (22") High
- **Door Size:**  
500 mm (20") Wide 490 mm (19") High
- **Air Consumption:**  
8.5L/Sec (18 cfm) @550kPa (80 psi)
- **Blast Nozzle Size:**  
6 mm Ceramic Nozzle
- **Cabinet Light:**  
9VDC
- **Cabinet Overall Dimension:**  
889 mm (35") Wide 558 mm (22") Deep  
1371 mm (54") High
- **Recommended Floor Area:**  
1700 mm (67") Wide 1500 mm (59") Deep
- **Window Size:**  
575 mm (23") Wide 265 mm (10") High
- **Air Supply Line:**  
10 mm (3/8")
- **Electrical Power:**  
N.A

