

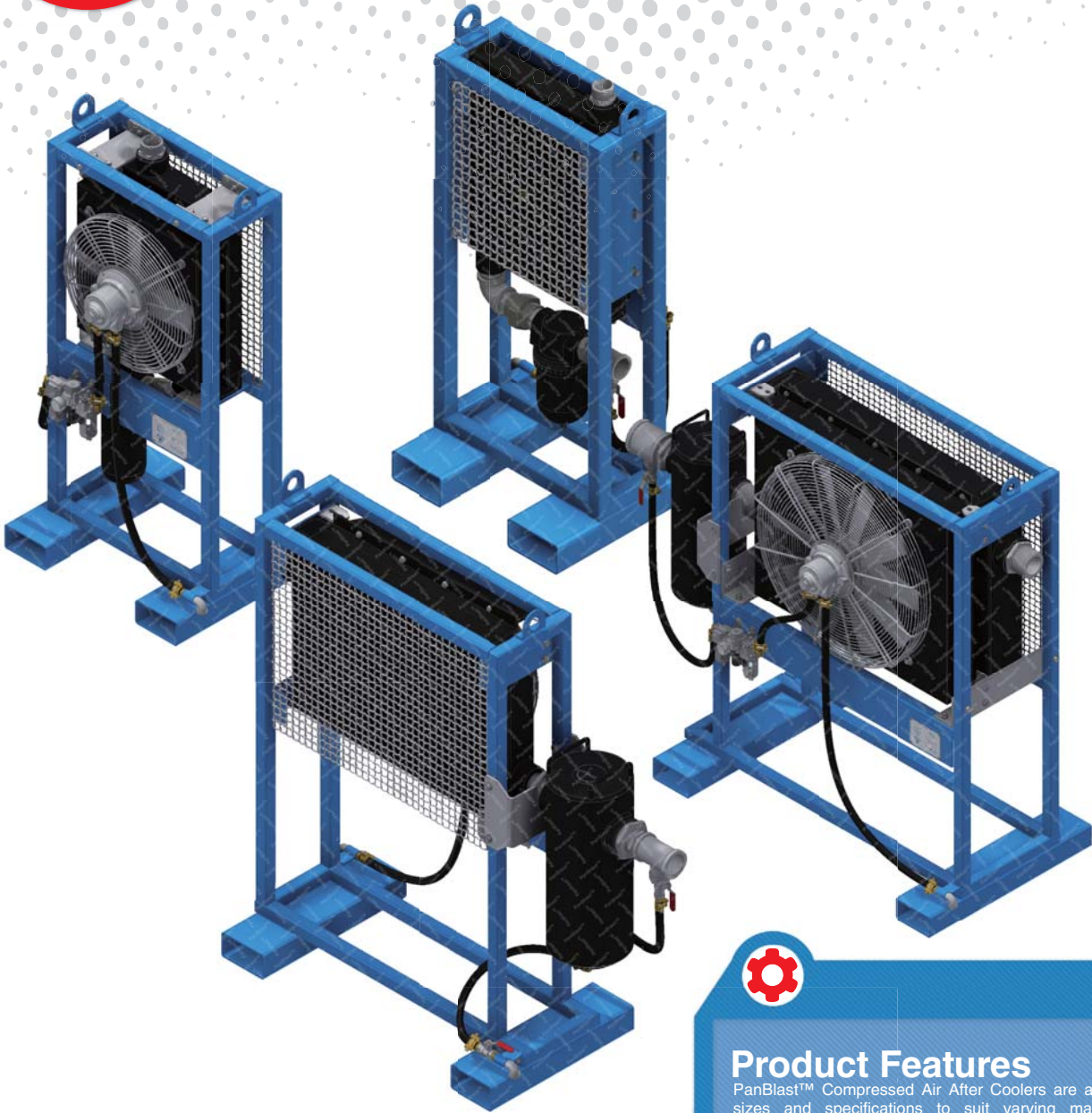
11

Compressed Air Preparation

- Moisture Separators
- Pressure Regulators
- After Coolers



Air Driven After Coolers



Product Features

PanBlast™ Compressed Air After Coolers are available in various sizes and specifications to suit varying market requirements worldwide. All units are portable, driven by a compressed air motor, and do not require an electrical supply for operation.

- ▶ Designed and manufactured in accordance with international standards and requirements.
- ▶ Industrial air motor driven, no electrical supply required.
- ▶ Fan – aluminum hub, polypropylene blades.
- ▶ Brazed bar and plate aluminum core.
- ▶ Aluminum core heat exchanger.
- ▶ 1034 kPa (150 psi) maximum operating pressure.
- ▶ Low maintenance and operating cost.
- ▶ Energy efficient.
- ▶ Maximum pressure drop < 3 psi.
- ▶ Available flow rates 250-3000 CFM.
- ▶ Ergonomic portable site design.
- ▶ Coolers should not operate in ambient temperatures below 35°F (1°C).
- ▶ Heavy duty compact design and rugged heavy duty construction.
- ▶ Eliminates abrasive moisture contamination.
- ▶ No equipment or airline freeze ups.

Common Applications

- ▶ Compressed air preparation for all types of blasting applications.
- ▶ Used in conjunction with desiccant or deliquescent dryers for removal of up to 90% moisture.
- ▶ In high humidity environments for maximum blasting productivity and reduced abrasive wastage.

Complementary Products



Pressure Blast Pots



Micromist Separator



Galaxy Blast Helmet



Titan II SAR



Blast Hoses



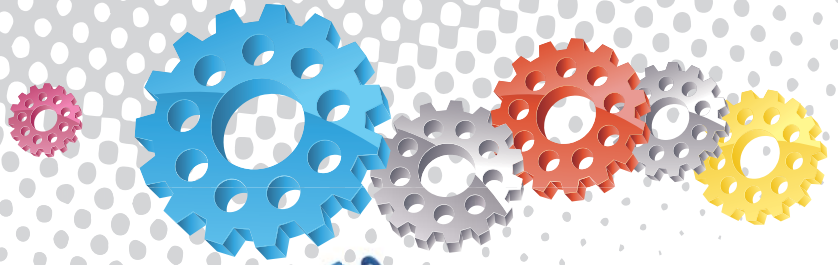
Blast Nozzles



VisiFlo Standard Airline Filter



FlexiDry



BAC-AF-0392-00



BAC-AF-0379-00



BAC-AF-0399-00



BAC-AF-0400-00

Technical Data

Max Flow Capacity (SCFM) @ 15°F (8°C) approach at different compressed air inlet temperature:

Inlet Temp °F (°C)	150 (66)	200 (93)	250 (121)	300 (149)	350 (177)
Model	Max Flow Capacity (SCFM) @ 15°F (8°C)				
ACC-250	281	246	230	186	163
ACC-400	488	428	400	324	284
ACC-750	885	776	725	587	515
ACC-950	1159	1017	950	770	675

Dimension

Stock Code	Description	Overall (L x W x H)	Inlet / Out Port
BAC-AF-0392-00	ACC-250 Air Driven After Cooler	525 x 492 x 1120	1-1/2" NPT
BAC-AF-0379-00	ACC-400 Air Driven After Cooler	622 x 525 x 1295	2" NPT
BAC-AF-0399-00	ACC-750 Air Driven After Cooler	1395 x 540 x 1283	2" NPT
BAC-AF-0400-00	ACC-950 Air Driven After Cooler	1632 x 700 x 1475	3" NPT