



## Blast Pot Accessories

■ Component & Parts



# Blast Pot Accessories



## Product Features

Panblast supplies a complete range of blast pot accessory items to suit most sizes and types of blast pots. Most accessories are available to fit both PanBlast™ and OEM blast pots.

- ▶ Exhaust mufflers.
- ▶ Ball valves.
- ▶ Non-return valves.
- ▶ Pressure gauges.
- ▶ Pressure relief valves.

## Common Applications

- ▶ PanBlast™ blast pot upgrades and parts replacement.
- ▶ OEM blast pot upgrades and parts replacement.

## Blast Pot Accessories



Exhaust Muffler



Relief Valves



Non Return Valves



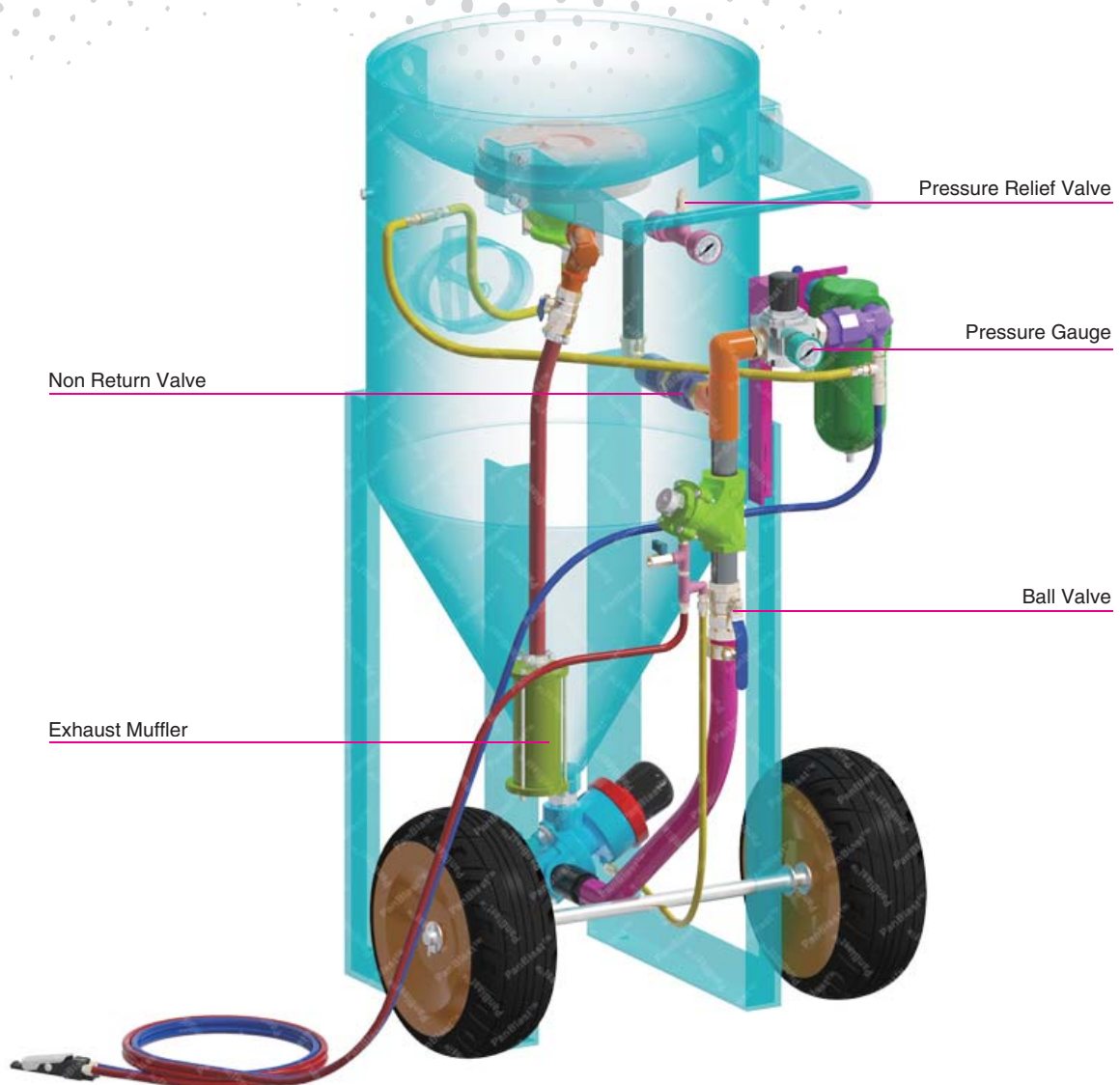
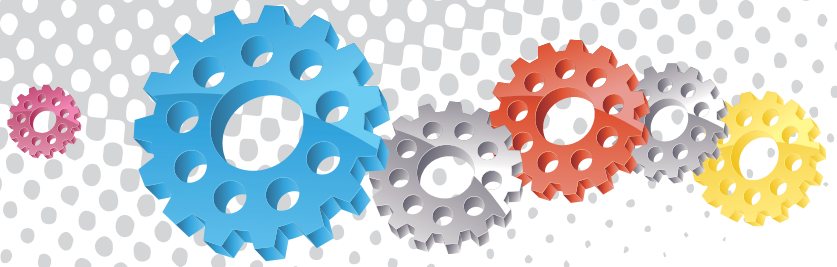
Pressure Gauge Base Mount



Pressure Gauge Rear Mount



Ball Valves



All data and information subject to change without prior notice. Brochure reference CAT-0403-01-00

## Component Highlights



Stock Code	Description	Weight	Stock Code	Description	Weight
BAC-PF-PB-0028	6 mm (1/4") Ball Valve	0.08 kg (0.18 lbs)	BAC-PF-PB-0030	6 mm (1/4")-125 PSI Pressure Relief Valve	0.04 kg (0.08 lbs)
BAC-PF-PB-0021	10 mm (3/8") Ball Valve	0.13 kg (0.29 lbs)	BAC-PF-PB-0240	13 mm(1/2")-150 PSI Pressure Relief Valve	0.16 kg (0.35 lbs)
BAC-PF-PB-0001	13 mm (1/2") Ball Valve	0.14 kg (0.30 lbs)	BAC-RC-PB-0022	Exhaust Muffler	0.96 kg (2.11 lbs)
BAC-PF-PB-0004	19 mm (3/4") Ball Valve	0.22 kg (0.49 lbs)	BAC-PF-PB-0002	13 mm (1/2") Non Return Valve	0.10 kg (0.22 lbs)
BAC-PF-PB-0003	25 mm (1") Ball Valve	0.34 kg (0.75 lbs)	BAC-PF-PB-0005	19 mm (3/4") Non Return Valve	0.20 kg (0.44 lbs)
BAC-PF-PB-0006	32 mm (1-1/4") Ball Valve	0.57 kg (1.26 lbs)	BAC-PF-PB-0107	25 mm (1") Non Return Valve	0.26 kg (0.57 lbs)
BAC-PF-PB-0008	38 mm (1-1/2") Ball Valve	0.79 kg (1.74 lbs)	BAC-PF-PB-0007	32 mm (1-1/4") Non Return Valve	0.40 kg (0.88 lbs)
BAC-PF-PB-0031	6 mm (1/4") Pressure Gauge-Rear Entry	0.06 kg (0.13 lbs)	BAC-PF-0274-00	1/2" BSP - 125 PSI Pressure Relief Valve	0.14 kg (0.31 lbs)
BAC-PF-PB-0032	6 mm (1/4") Pressure Gauge-Base Entry	0.08 kg (0.18 lbs)	BAC-PF-PB-0226	1/4" BSP - 150 PSI Pressure Relief Valve	0.04 kg (0.08 lbs)