

3

Remote Control Handles

- Air Bleed
- Non-Bleed
- Electric
- Twinline Hoses



QuikStop IIS Electric Control Handle



Product Features

The PanBlast™ QuikStop IIS Electric Control Handle is an ultra compact ergonomic deadman device, allowing an operator to safely operate the blast nozzle without a conventional hold down handle, thus reducing operator fatigue. It can be used for control distances up to 100 m (328 ft).

- ▶ Simple ball and wrist strap device.
- ▶ Control distances up to 100 m (328 ft).
- ▶ Immediate electric control signal shutoff if blast hose is dropped.
- ▶ Reduces operator fatigue.

Common Applications

- ▶ General abrasive blasting operations.
- ▶ Operations requiring extended blasting uptime.

Complementary Products



Kombi Remote Valve



Kombi II Remote Valve



Corsa II Valve



Tandem Inlet Valve



AirFlo Pneumatic Handle



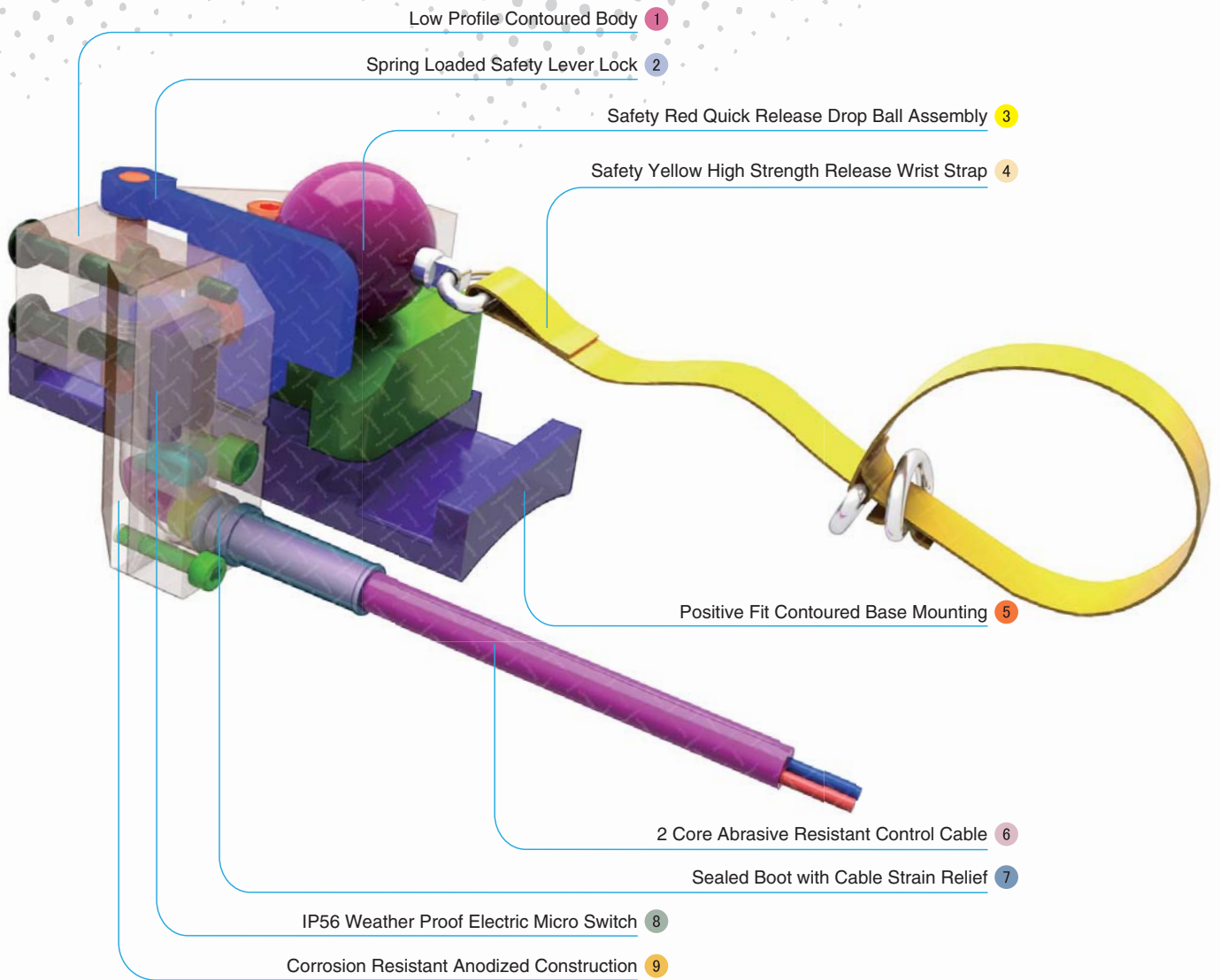
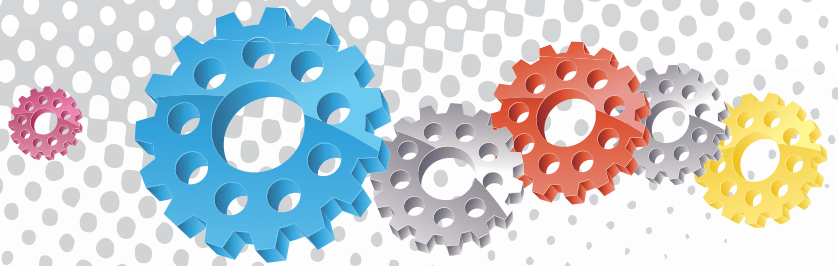
Corsa Valve



Blast Hoses



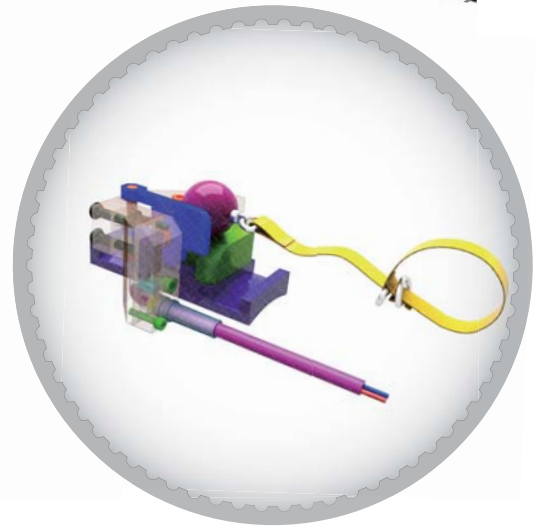
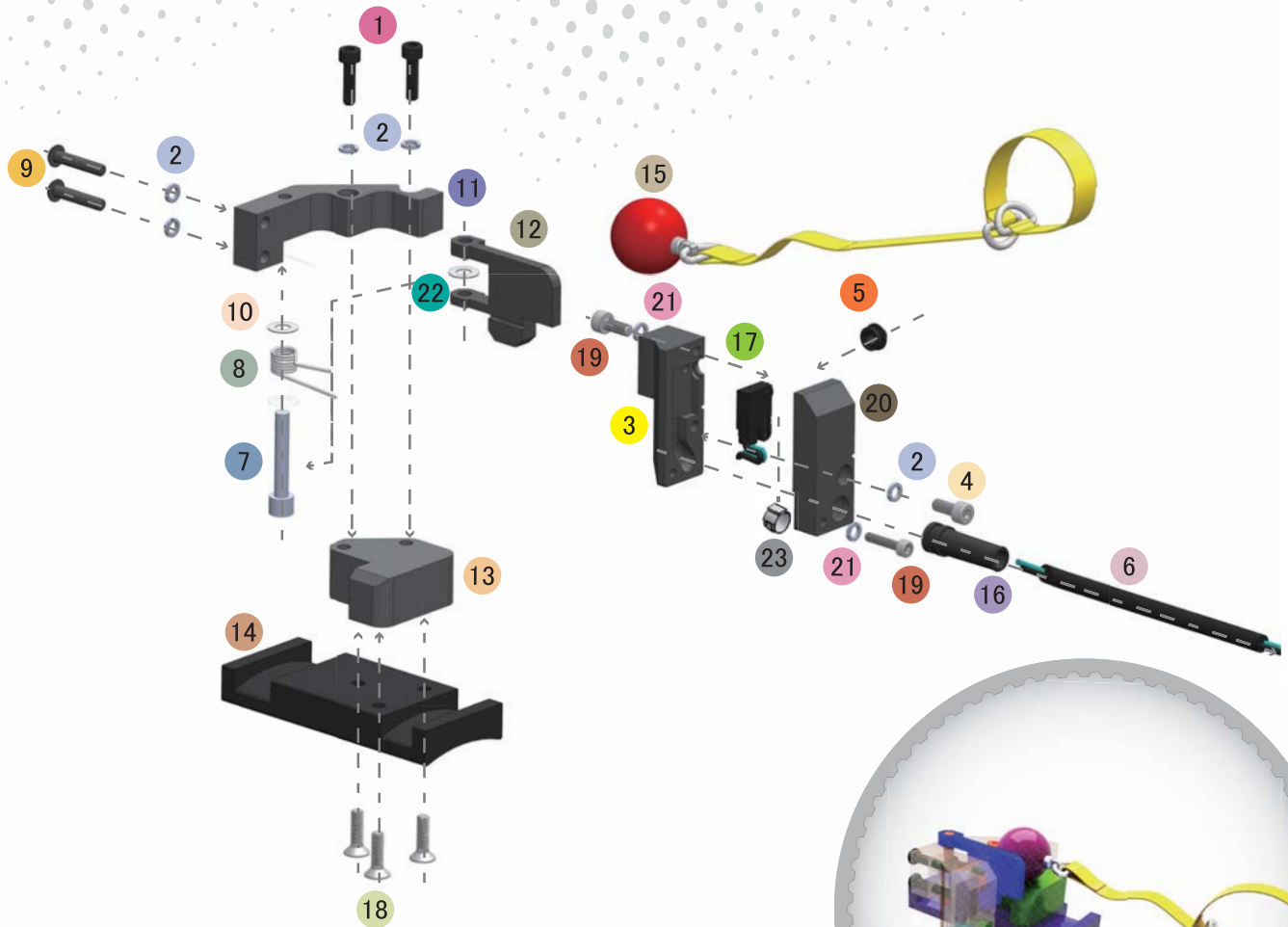
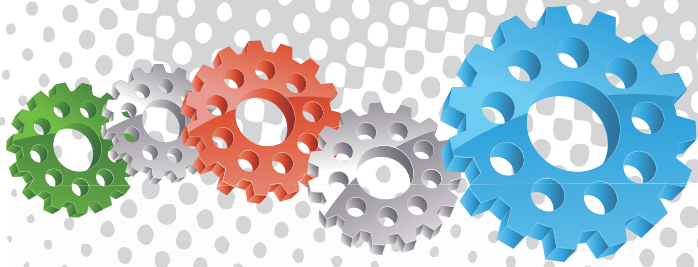
Electric Remote Systems



Component Highlights



- | | | |
|---|---|---|
| 1 Low Profile Contoured Body | 4 Safety Yellow High Strength Release Wrist Strap | 7 Sealed Boot with Cable Strain Relief |
| 2 Spring Loaded Safety Lever Lock | 5 Positive Fit Contoured Base Mounting | 8 IP56 Weather Proof Electric Micro Switch |
| 3 Safety Red Quick Release Drop Ball Assembly | 6 2 Core Abrasive Resistant Control Cable | 9 Corrosion Resistant Anodized Construction |



Assembly

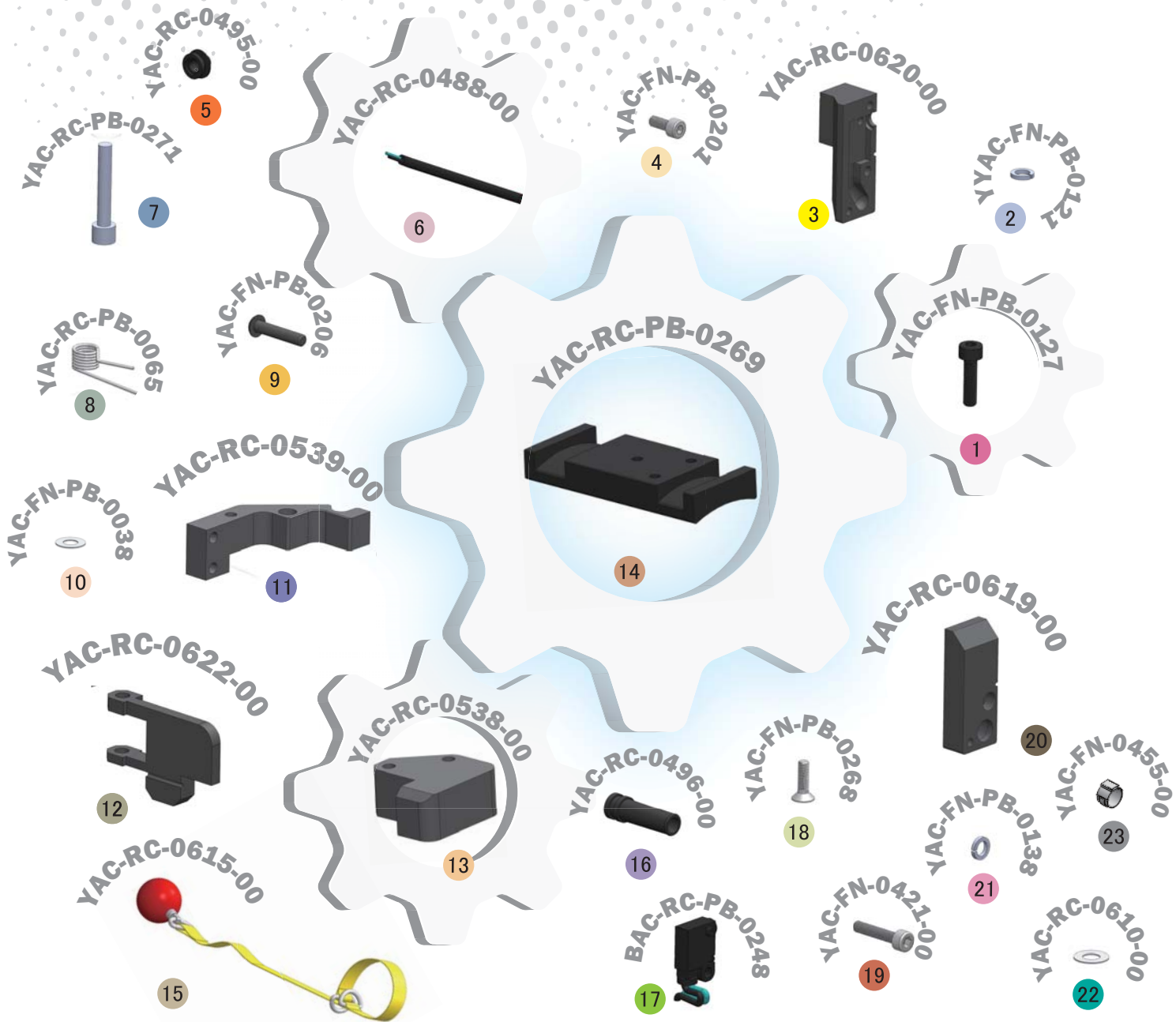
Stock Code
BAC-RC-0612-00

Description
QuikStop IIS Electric Control Handle

Weight
0.3 kg (10.6 lbs)



All data and information subject to change without prior notice. Brochure reference CAT-0303-05-01



Parts List



Description	Qty	Description	Qty	Description	Qty
1 Screw	2	9 Screw	2	17 Electric Switch	1
2 Spring Washer	5	10 Flat Washer	1	18 Screw	3
3 Lower Block	1	11 Mounting Bracket	1	19 Screw	2
4 Screw	1	12 Safety Lock Lever	1	20 Upper Block	1
5 Button Cap	1	13 Mounting Block	1	21 Spring Washer	2
6 Cable	0.8 m	14 Base	1	22 Shim Washer	1
7 Pin	1	15 Ball With Strap	1	23 Single Ear Clamp	1
8 Safety Lock Spring	1	16 Cable Protector	1		