

Blast Pots

- Automatic
- Manual
- Specialty
- Bulk



BP600-3/MY Blast Pot



Product Features

PanBlast™ BP Series Blast Pots are available in multiple configurations and specifications to suit varying market requirements worldwide. The BP600-3 is a full-size, manual blast pot, suitable for large-scale blasting operations.

- ▶ Designed and manufactured in accordance with international standards and requirements.
- ▶ Third party pressure vessel certificates available on request.
- ▶ Plana II type abrasive control valve for quick metering adjustment and easy maintenance.
- ▶ Pressure gauge and relief valve included.
- ▶ Quick and easy parts replacement.
- ▶ Wide, pneumatic wheels for increased maneuverability and stability.
- ▶ 200 litres (6 ft³) abrasive capacity, 125 psi pressure rating.
- ▶ 32 mm (1-1/4") fittings.

Common Applications

- ▶ On site industrial and commercial blasting.
- ▶ Blast and painting contractor yard work.
- ▶ Blast room applications with or without abrasive recovery systems.
- ▶ In situ blasting in shipyards and slipways.

Complementary Products



Blast Hoses



Cosmo SAR



Couplings & Nozzle Holders



Whip Check Cables



ATN Blast Nozzles



PBF II-1 Airline Filter

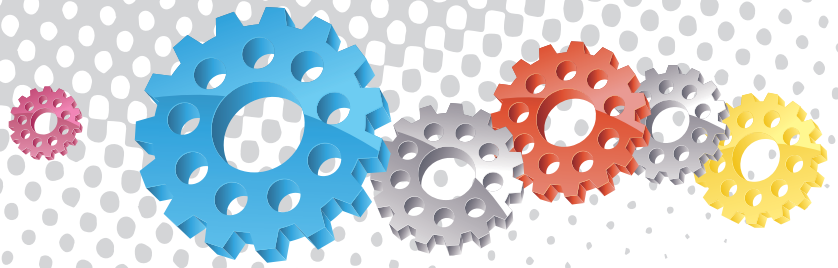


UniFlo Conversion Kit



Blasting Suit & Gloves

Note: Contact the local governing authority to determine if manually operated blast pots are suitable for use in your region.



1 Fast Filling Dished Top

Crane Lifting Lugs 11

2 Safety Pressure Relief Valve and Gauge

Ergonomic Transportation Handle 10

3 High Flow Air Exhaust Ball Valve

Large Type Pop Up Valve & Seating Ring 9

4 Full Flow Pusher Line Choke Valve

Air Inlet Ball Valve 8

5 All Terrain Transportation Wheels

Stable Quad Leg Support Frame 7

6 Plana II Abrasive Metering Valve



Component Highlights



1 Fast Filling Dished Top

5 All Terrain Transportation Wheels

9 Large Type Pop Up Valve & Seating Ring

2 Safety Pressure Relief Valve and Gauge

6 Plana II Abrasive Metering Valve

10 Ergonomic Transportation Handle

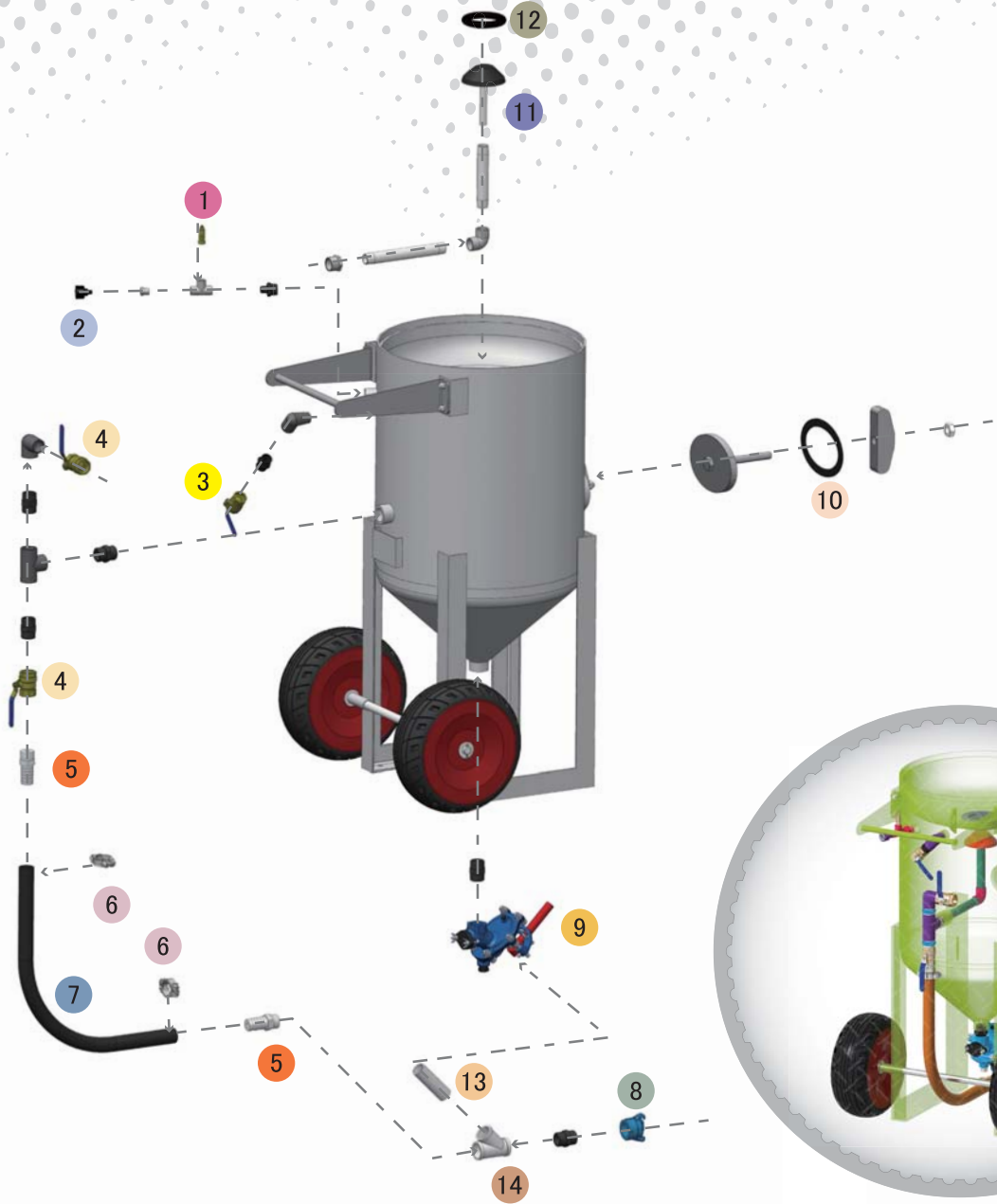
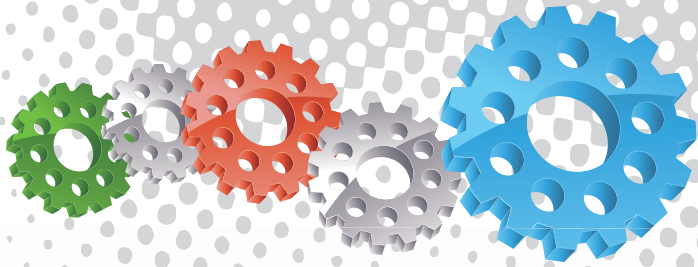
3 High Flow Air Exhaust Ball Valve

7 Stable Quad Leg Support Frame

11 Crane Lifting Lugs

4 Full Flow Pusher Line Choke Valve

8 Air Inlet Ball Valve



Assembly

| Stock Code | Description | Dry Weight | Abrasive Capacity | Piping Size |
|----------------|----------------------------|------------------|---------------------------------|----------------|
| BEP-PS-0048-00 | BP600-3/MY Manual Plana II | 200 kg (441 lbs) | 200 litres (6 ft ³) | 32 mm (1-1/4") |



All data and information subject to change without prior notice. Brochure reference CAT-0102-05-01



Parts List



| Description | Qty | Description | Qty | Description | Qty |
|--|-----|---|-----|------------------------------|-----|
| 1 1/2" BSP - 125 PSI Pressure Relief Valve | 1 | 6 Hose Clamp | 2 | 11 Pop Up Valve - StemType | 1 |
| 2 6 mm (1/4") Pressure Gauge - Rear Entry | 1 | 7 32 mm (1-1/4") Air Supply Hose | 1 m | 12 Pop Up Valve Seating Ring | 1 |
| 3 25 mm (1") Ball Valve | 1 | 8 NTC-1 Nylon Threaded Pot Coupling | 1 | 13 Barrel Nipple | 1 |
| 4 32 mm (1-1/4") Ball Valve | 2 | 9 Plana II Valve Assembly | 1 | 14 Y Piece | 1 |
| 5 KC Nipple | 2 | 10 Blast Pot-H/Hole 192x144 -Sealing Gasket | 1 | | |