

Blast Pots

■ Automatic ■ Manual ■ Specialty ■ Bulk



# BP600-3 Blast Pots



## Product Features

PanBlast™ BP Series Blast Pots are available in multiple configurations and specifications to suit varying market requirements worldwide. The BP600-3 is a full-size, manual blast pot, suitable for large-scale blasting operations.

- ▶ Designed and manufactured in accordance with international standards and requirements.
- ▶ Third party pressure vessel test certificates available on request.
- ▶ Pressure gauge and relief valve included.
- ▶ Quick and easy parts replacement.
- ▶ Wide, pneumatic wheels for increased maneuverability and stability.
- ▶ 200 litres (6 ft³) abrasive capacity, 125 or 150 psi pressure rating.
- ▶ 32 mm (1-1/4") fittings.

## Common Applications

- ▶ On site industrial and commercial blasting.
- ▶ Blast and painting contractor yard work.
- ▶ Blast room applications with or without abrasive recovery systems.
- ▶ In situ blasting in shipyards and slipways.

## Complementary Products



Blast Hoses



Cosmo SAR



Couplings & Nozzle Holders



Whip Check Cables



Blast Nozzles



PBF II-1 Airline Filter

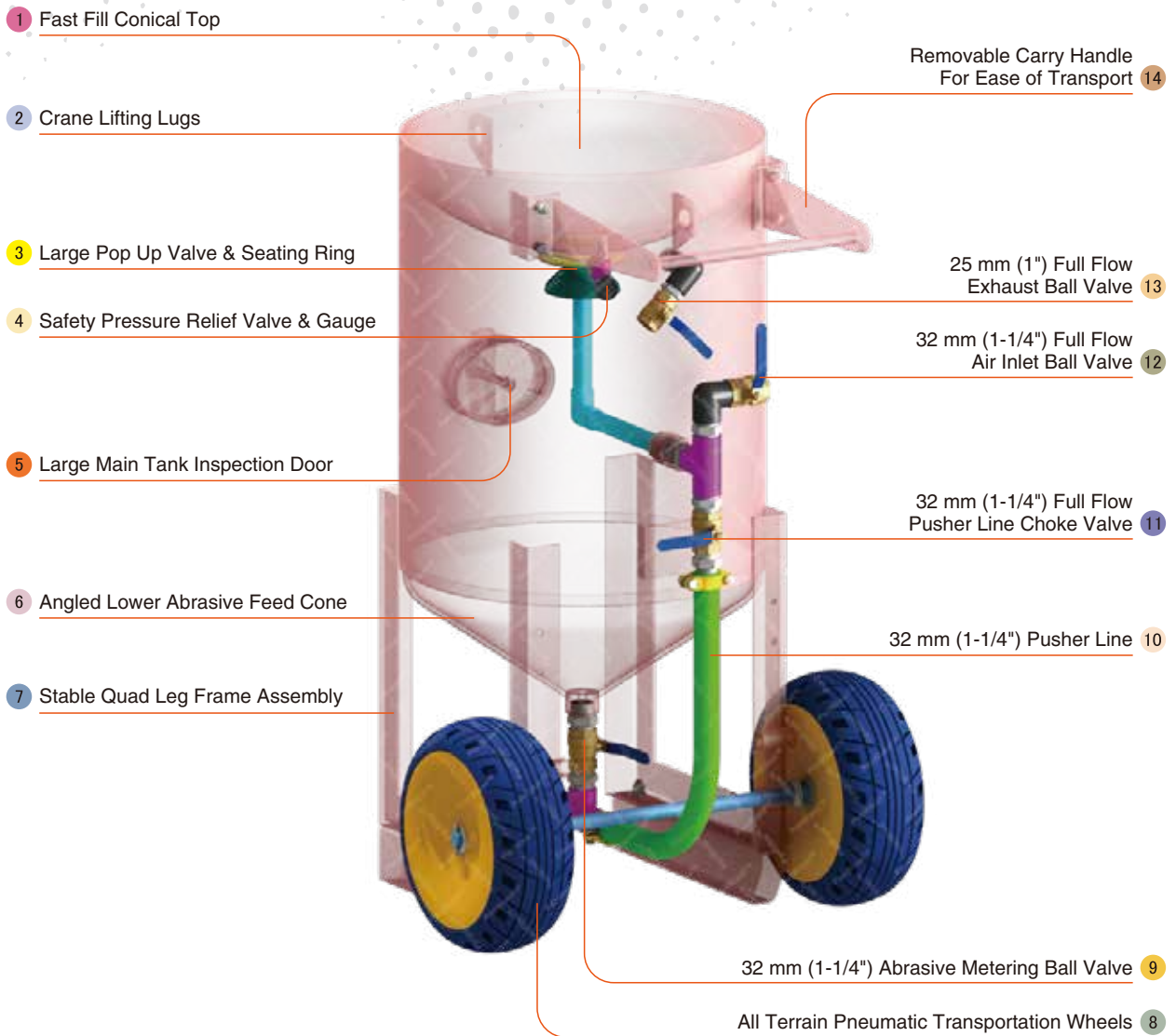
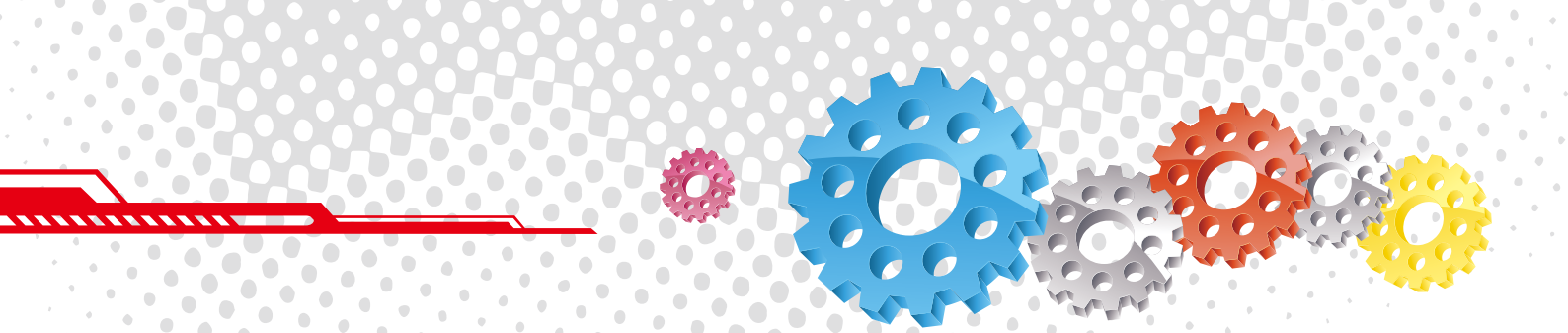


UniFlo Conversion Kit



Blasting Suit & Gloves

Note: Contact the local governing authority to determine if manually operated blast pots are suitable for use in your region.

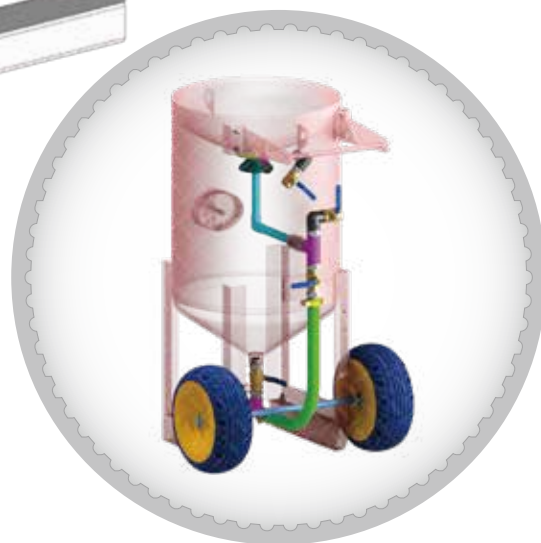
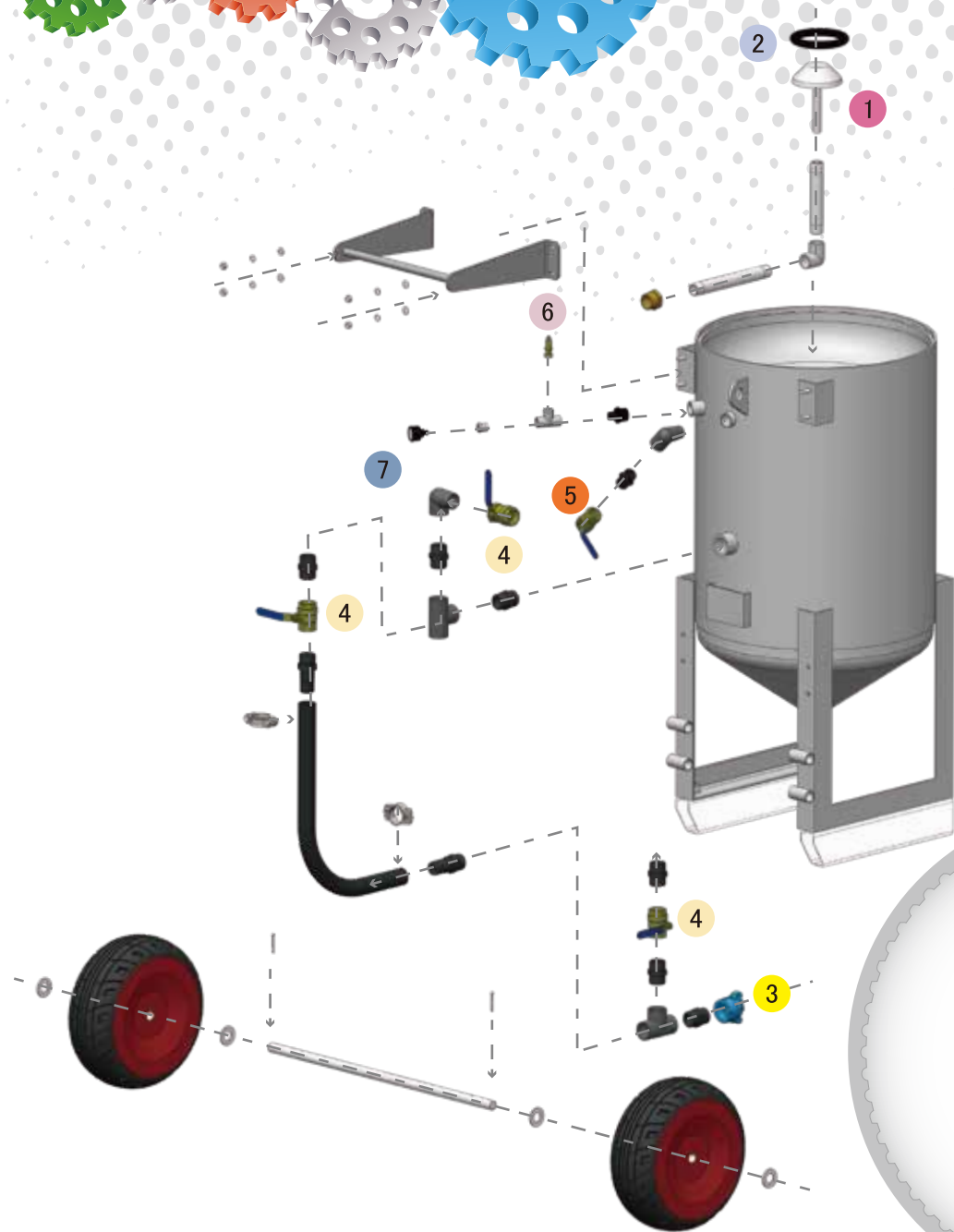
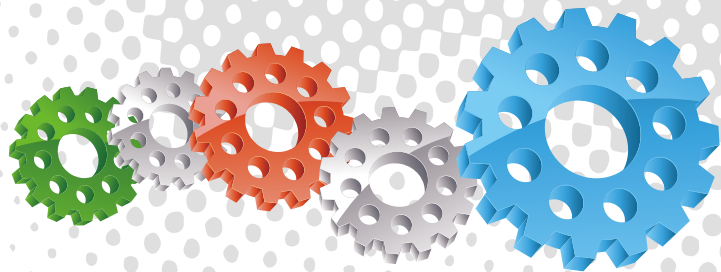


## Component Highlights



- |  |   |   |
|--|---|---|
| 1 Fast Fill Conical Top                | 6 Angled Lower Abrasive Feed Cone             | 11 32 mm (1-1/4") Full Flow Pusher Line Choke Valve |
| 2 Crane Lifting Lugs                   | 7 Stable Quad Leg Frame Assembly              | 12 32 mm (1-1/4") Full Flow Air Inlet Ball Valve    |
| 3 Large Pop Up Valve & Seating Ring    | 8 All Terrain Pneumatic Transportation Wheels | 13 25 mm (1") Full Flow Exhaust Ball Valve          |
| 4 Safety Pressure Relief Valve & Gauge | 9 32 mm (1-1/4") Abrasive Metering Ball Valve | 14 Removable Carry Handle For Ease of Transport     |
| 5 Large Main Tank Inspection Door      | 10 32 mm (1-1/4") Pusher Line                 |   |





## Assemblies

Stock Code	Description	Dry Weight	Abrasive Capacity	Piping Size
BEP-PS-0052-00	BP600-3/MY Manual Ball Valve	195 kg (430 lbs)	200 litres (6 ft³)	32 mm (1-1/4")
BEP-PS-0053-00	BP600-3/SG Manual Ball Valve	195 kg (430 lbs)	200 litres (6 ft³)	32 mm (1-1/4")
BEP-PS-0073-00	BP600-3/AU/NZ Manual Ball Valve	195 kg (430 lbs)	200 litres (6 ft³)	32 mm (1-1/4")

### Notation:

AU: Approved by Worksafe, Australia.

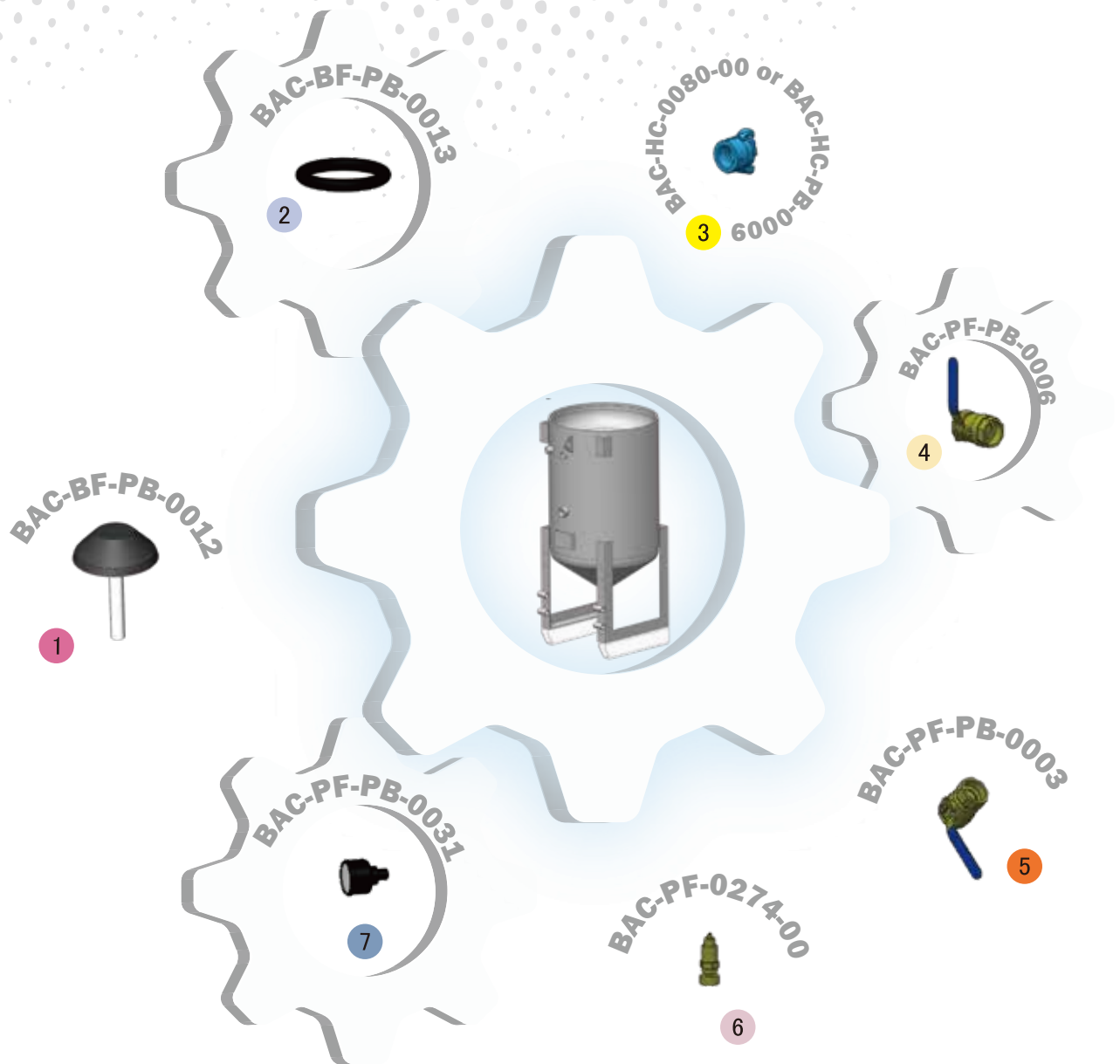
MY: Approved by Department of Occupational Safety and Health, Malaysia.

NZ: Approved by Department of Labour, New Zealand.

SG: Approved by Ministry of Manpower, Singapore.



All data and information subject to change without prior notice. Brochure reference CAT-0102-04-00



## Parts List



Description	Qty	Description	Qty	Description	Qty
1 Pop Up Valve - Stem Type	1	4 32 mm (1-1/4") Ball Valve	3	7 6 mm (1/4") Pressure Gauge -Rear Entry	1
2 Pop Up Valve Seating Ring	1	5 25 mm (1") Ball Valve	1		
3 Threaded Blast Coupling	1	6 1/2" BSP - 125 PSI Pressure Relief Valve	1		