

# Blast Pots

- Automatic
- Manual
- Specialty
- Bulk



# BP110-3 Blast Pots



## Product Features

PanBlast™ BP110-3 Blast Pots are available in multiple configurations and specifications to suit varying market requirements worldwide.

- ▶ Designed and manufactured in accordance with international standards and requirements.
- ▶ Authoritative certificates or third party certificates available on request.
- ▶ Simple manual ball valve operation.
- ▶ Pressure gauge and relief valve included.
- ▶ Quick and easy parts replacement.
- ▶ 31 litres (1.1 ft³) abrasive capacity.
- ▶ 19 mm (3/4") fittings.

## Common Applications

- ▶ On site industrial and commercial blasting.
- ▶ Blast and painting contractor yard work.
- ▶ Blast room applications with or without abrasive recovery systems.
- ▶ In situ blasting in shipyards and slipways.

## Complementary Products



Blast Hoses



Galaxy Blast Helmet



Couplings & Nozzle Holders



Whip Check Cables



ATN Blast Nozzles



PBF Filter Cartridge

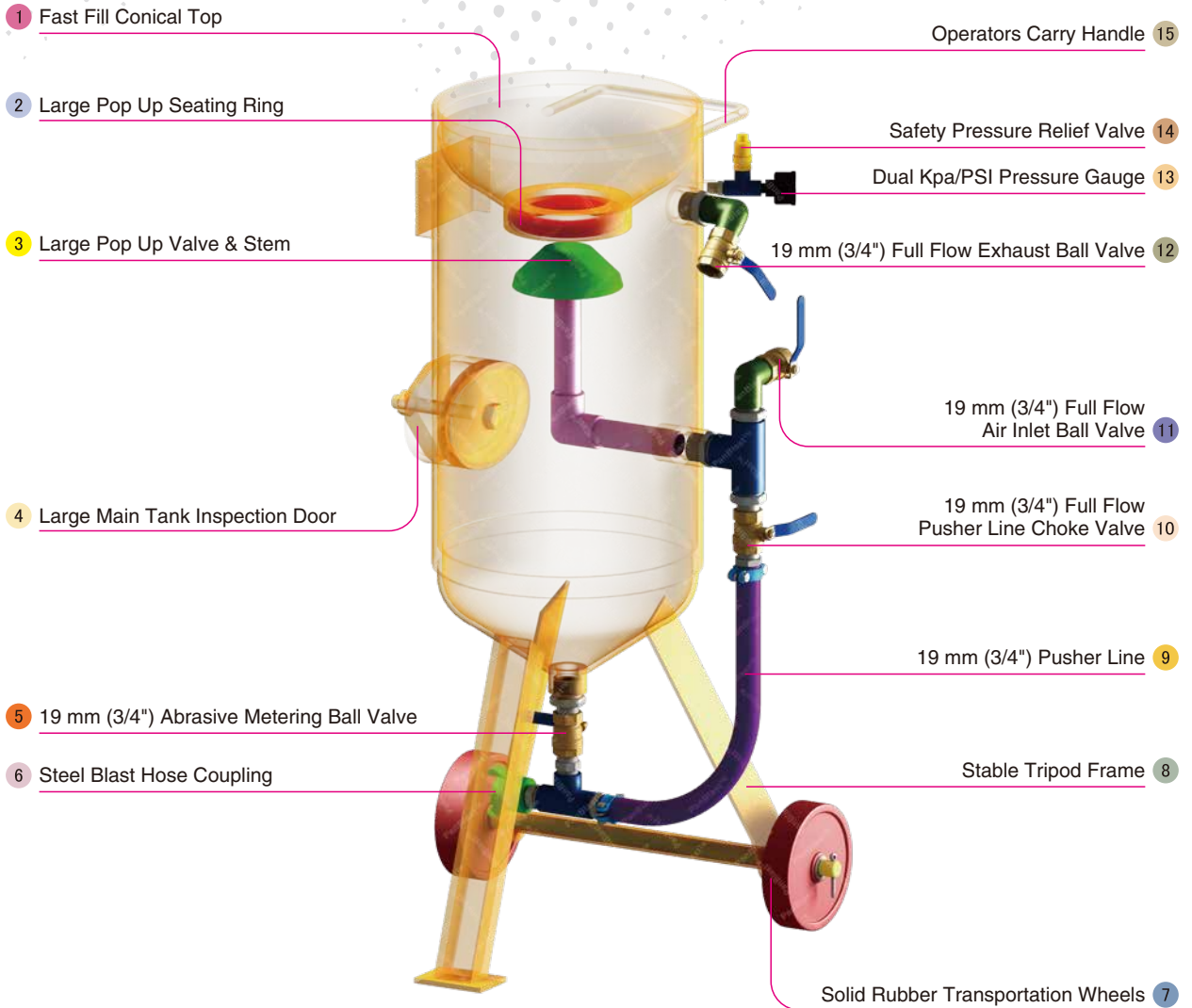
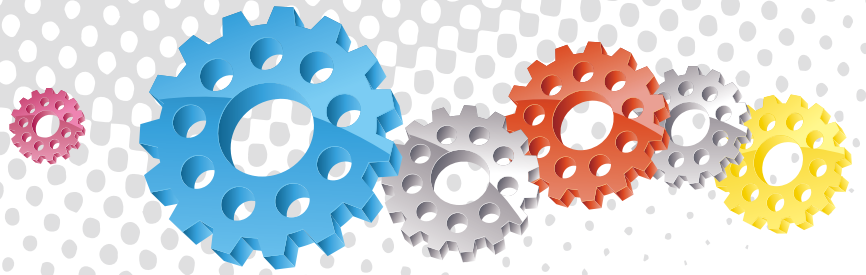


Hypodermic Needle Gauge



Blasting Suit & Gloves

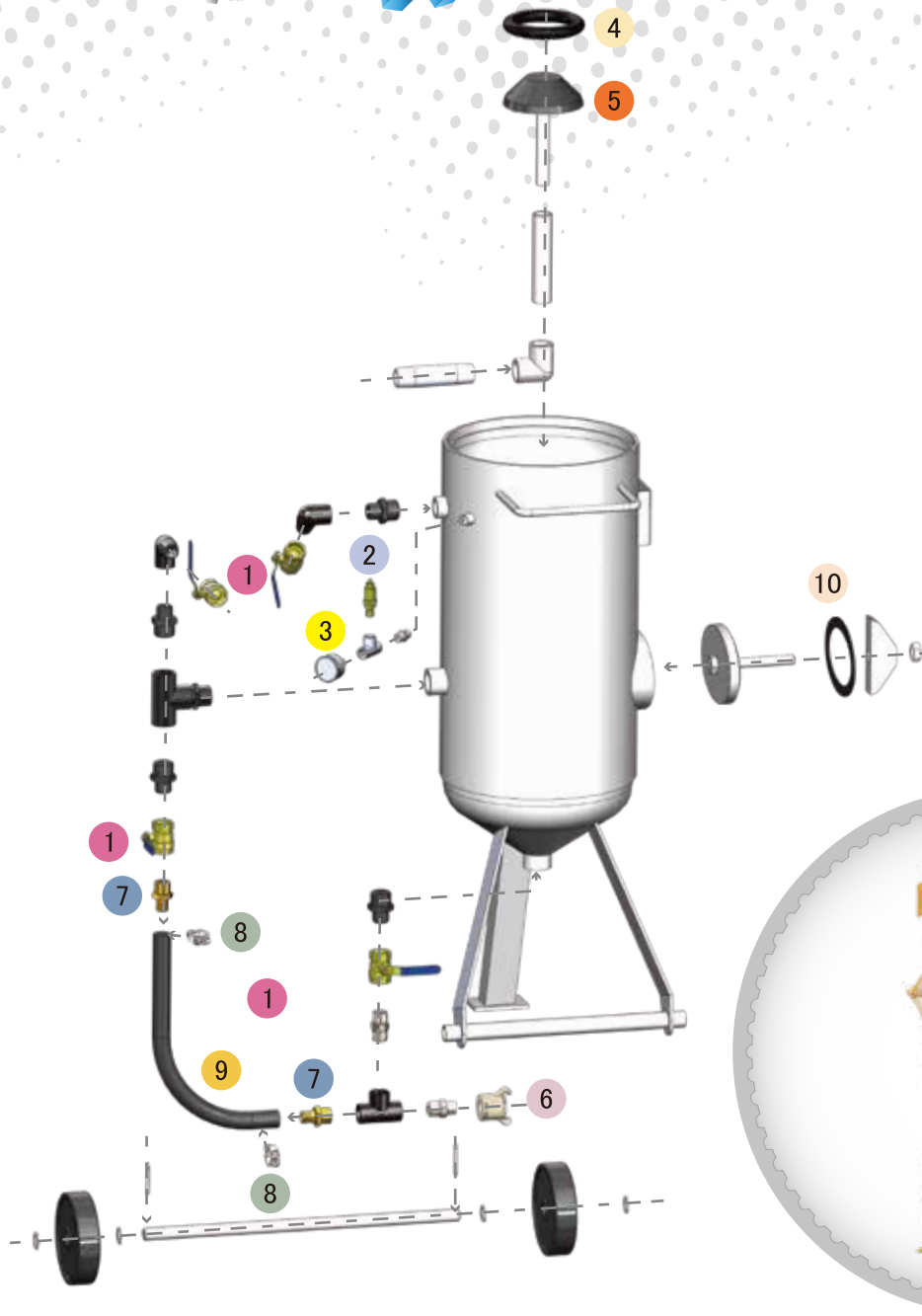
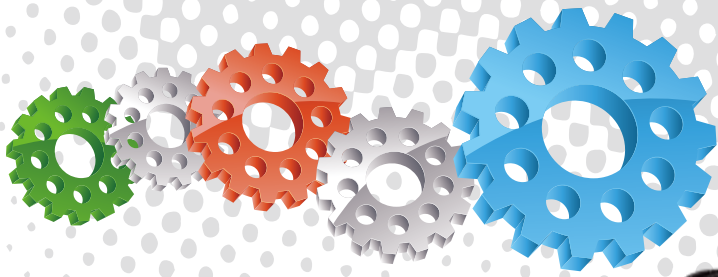
Note: Contact the local governing authority to determine if manually operated blast pots are suitable for use in your region.



## Component Highlights



- |   |   |  |
|---|---|--|
| 1 Fast Fill Conical Top                     | 6 Steel Blast Hose Coupling                       | 11 19 mm (3/4") Full Flow Air Inlet Ball Valve |
| 2 Large Pop Up Seating Ring                 | 7 Solid Rubber Transportation Wheels              | 12 19 mm (3/4") Full Flow Exhaust Ball Valve   |
| 3 Large Pop Up Valve & Stem                 | 8 Stable Tripod Frame                             | 13 Dual Kpa/PSI Pressure Gauge                 |
| 4 Large Main Tank Inspection Door           | 9 19 mm (3/4") Pusher Line                        | 14 Safety Pressure Relief Valve                |
| 5 19 mm (3/4") Abrasive Metering Ball Valve | 10 19 mm (3/4") Full Flow Pusher Line Choke Valve | 15 Operators Carry Handle                      |



## Assemblies

Stock Code	Description	Dry Weight	Abrasive Capacity	Piping Size
BEP-PS-0066-00	BP110-3/SG Manual Ball Valve	59 kg(130 lbs)	31 litres (1.1 ft <sup>3</sup> )	19 mm (3/4")
BEP-PS-0075-00	BP110-3/AU/MY/NZ Manual Ball Valve	59 kg(130 lbs)	31 litres (1.1 ft <sup>3</sup> )	19 mm (3/4")

### Notation:

AU: Approved by Worksafe, Australia.

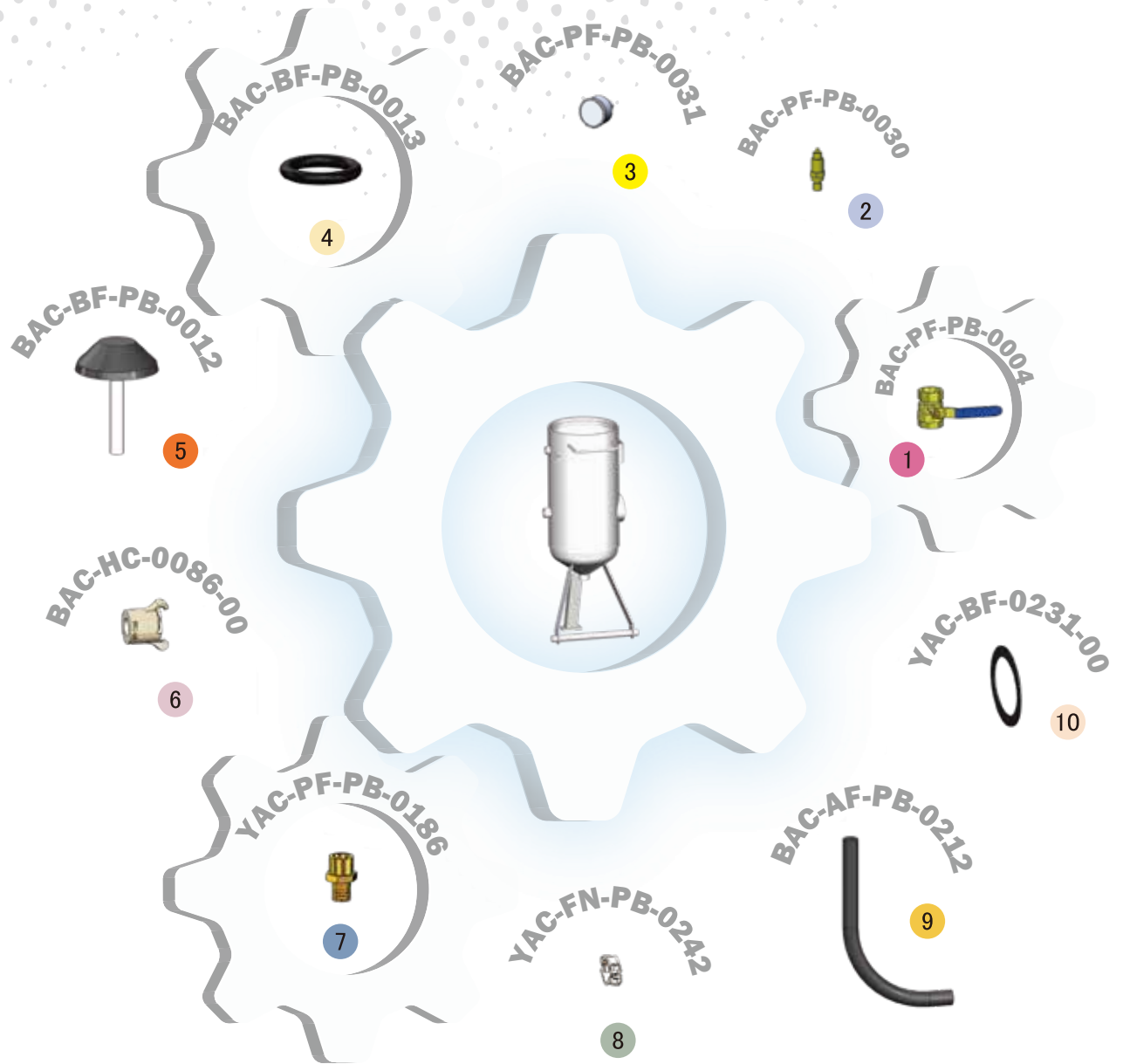
MY: Approved by Department of Occupational Safety and Health, Malaysia.

NZ: Approved by Department of Labour, New Zealand.

SG: Approved by Ministry of Manpower, Singapore.



All data and information subject to change without prior notice. Brochure reference CAT-0102-02-01



## Parts List



Description	Qty	Description	Qty	Description	Qty
1 19 mm (3/4") Ball Valve	4	5 Pop Up Valve - Stem Type	1	9 19 mm (3/4") Air Supply Hose	0.7 m
2 6 mm (1/4") - 125 PSI Pressure Relief Valve	1	6 STC-1/2 Steel Threaded Pot Coupling	1	10 Blast Pot-H/Hole 192x144-Sealing Gasket	1
3 6 mm (1/4") Pressure Gauge - Rear Entry	1	7 KC Nipple	2		
4 Pop Up Valve Seating Ring	1	8 Hose Clamp	2		