

# Blast Pots

- Automatic
- Manual
- Specialty
- Bulk



# BP600-1/MY Blast Pot



## Product Features

PanBlast™ BP Series Blast Pots are available in multiple configurations and specifications to suit varying market requirements worldwide. The BP600-1 is a full-size, automatic blast pot, suitable for large-scale blasting operations.

- ▶ Designed and manufactured in accordance with international standards and requirements.
- ▶ Third party pressure vessel certificates available on request.
- ▶ UniFlo combination type remote control valve.
- ▶ AirFlo air-bleed type pneumatic deadman handle.
- ▶ Hardened carbon steel ball valve for use with expendable abrasives.
- ▶ Moisture trap, exhaust muffler and main air isolation valve standard.
- ▶ Wide, pneumatic wheels for increased maneuverability and stability.
- ▶ 200 litres (6 ft<sup>3</sup>) abrasive capacity, 125 psi pressure rating.
- ▶ 32 mm (1-1/4") fittings.

## Common Applications

- ▶ On site industrial and commercial blasting.
- ▶ Blast and painting contractor yard work.
- ▶ Blast room applications with or without abrasive recovery systems.
- ▶ In situ blasting in shipyards and slipways.

## Complementary Products



Blast Hoses



Safe-T-Pinch Valve



Spartan Blast Helmet



PBF II-1 Airline Filter



Electric Remote Conversion Kit



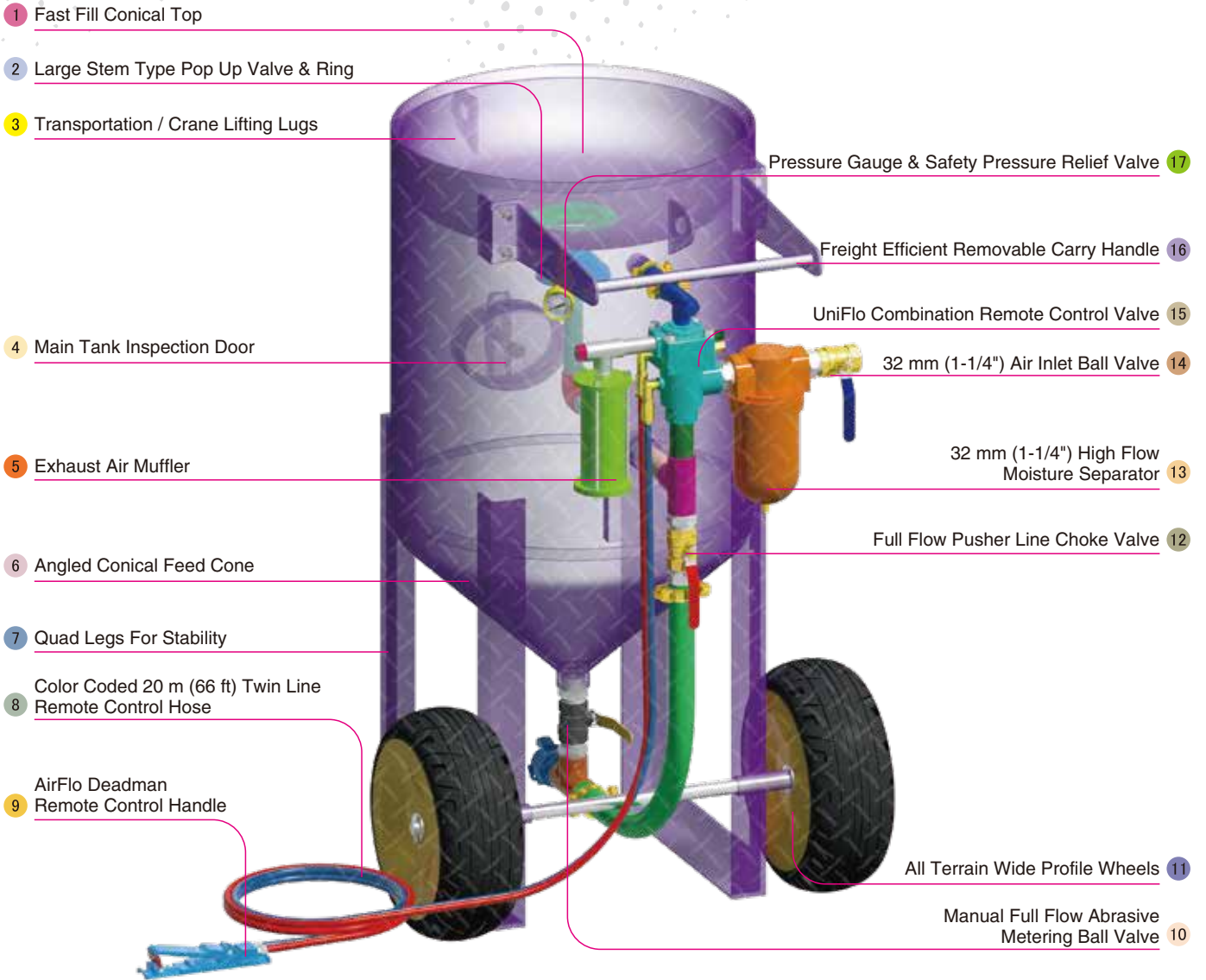
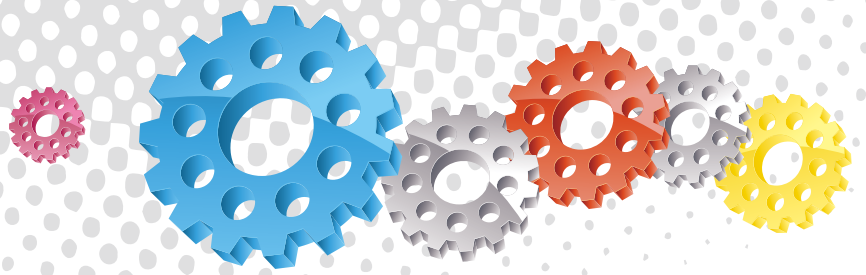
ATN Blast Nozzles



ProFlo Recycling System



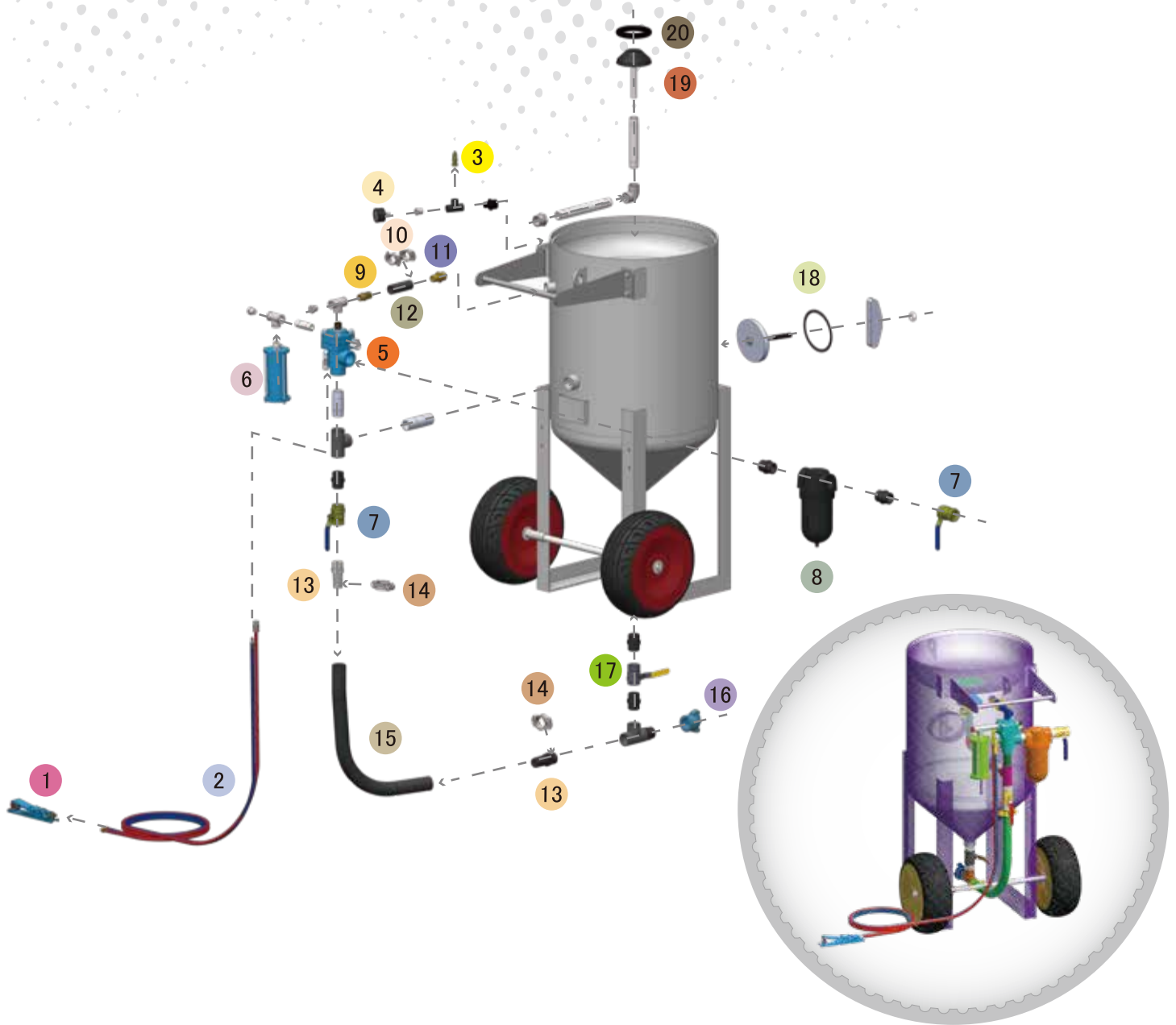
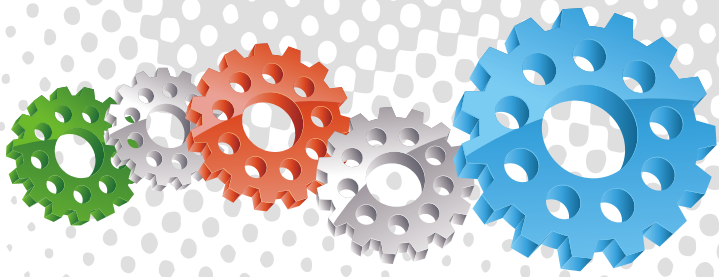
Airless Spray Pumps



## Component Highlights



- |                                       |  |  |
|---------------------------------------|--|--|
| 1 Fast Fill Conical Top               | 7 Quad Legs For Stability                                | 13 32 mm (1-1/4") High Flow Moisture Separator   |
| 2 Large Stem Type Pop Up Valve & Ring | 8 Color Coded 20 m (66 ft) Twin Line Remote Control Hose | 14 32 mm (1-1/4") Air Inlet Ball Valve           |
| 3 Transportation / Crane Lifting Lugs | 9 AirFlo Deadman Remote Control Handle                   | 15 UniFlo Combination Remote Control Valve       |
| 4 Main Tank Inspection Door           | 10 Manual Full Flow Abrasive Metering Ball Valve         | 16 Freight Efficient Removable Carry Handle      |
| 5 Exhaust Air Muffler                 | 11 All Terrain Wide Profile Wheels                       | 17 Pressure Gauge & Safety Pressure Relief Valve |
| 6 Angled Conical Feed Cone            | 12 Full Flow Pusher Line Choke Valve                     |  |



## Assembly

Stock Code	Description	Dry Weight	Abrasive Capacity	Piping Size
BEP-PS-0060-00	BP600-1/MY UniFlo Abra Ball.Viv AirFlo	155 kg (342 lbs)	200 litres (6 ft³)	32 mm (1-1/4")



All data and information subject to change without prior notice. Brochure reference CAT-0101-12-02



## Parts List



Description	Qty	Description	Qty	Description	Qty
1 AirFlo Pneumatic Control Handle	1	8 32 mm (1-1/4") Port Moisture Separator	1	15 32 mm (1-1/4") Air Supply Hose	0.85 m
2 20 m (66') Twinline Hose Assembly	1	9 Hose Barb	1	16 NTC-1 Nylon Threaded Pot Coupling	1
3 1/2" BSP - 125 PSI Pressure Relief Valve	1	10 Hose Clamp	2	17 1-1/4" Abrasive Ball Valve	1
4 6 mm (1/4") Pressure Gauge - Rear Entry	1	11 Hose Barb	1	18 Blast Pot-H/Hole 192 x 144 -Sealing Gasket	1
5 UniFlo Valve With Fittings - 90 Deg	1	12 25 mm (1") Air Supply Hose	0.15 m	19 Pop Up Valve - Stem Type	1
6 Exhaust Muffler	1	13 KC Nipple	2	20 Pop Up Valve Seating Ring	1
7 32 mm (1-1/4") Ball Valve	2	14 Hose Clamp	2		