

Blast Pots

- Automatic
- Manual
- Specialty
- Bulk



BP50-1 Blast Pots



Product Features

PanBlast™ BP Series Blast Pots are available in multiple configurations and specifications to suit varying market requirements worldwide. The BP50-1 is a compact, automatic blast pot, suited to touch-up blasting and operation in confined spaces.

- ▶ Designed and manufactured in accordance with international standards and requirements.
- ▶ Third party pressure vessel certification available on request.
- ▶ Separate Sola 5 inlet and exhaust valves, for fast and efficient operation.
- ▶ AirFlo air-bleed type pneumatic deadman handle.
- ▶ Junior Plana Type abrasive control valve with durable cast iron construction.
- ▶ Moisture trap, exhaust muffler and main air isolation valve standard.
- ▶ 14 litres (0.5 ft³) abrasive capacity, 125 or 150psi pressure rating.
- ▶ 12.5 mm (1/2") fittings.

Common Applications

- ▶ On site industrial and commercial blasting.
- ▶ Blast and painting contractor yard work.
- ▶ Blast room applications with or without abrasive recovery systems.
- ▶ In situ blasting in shipyards and slipways.

Complementary Products



Moisture Separator



Blast Hoses



ATN-S Blast Nozzles



Twinline Hose



Pop Up Valves



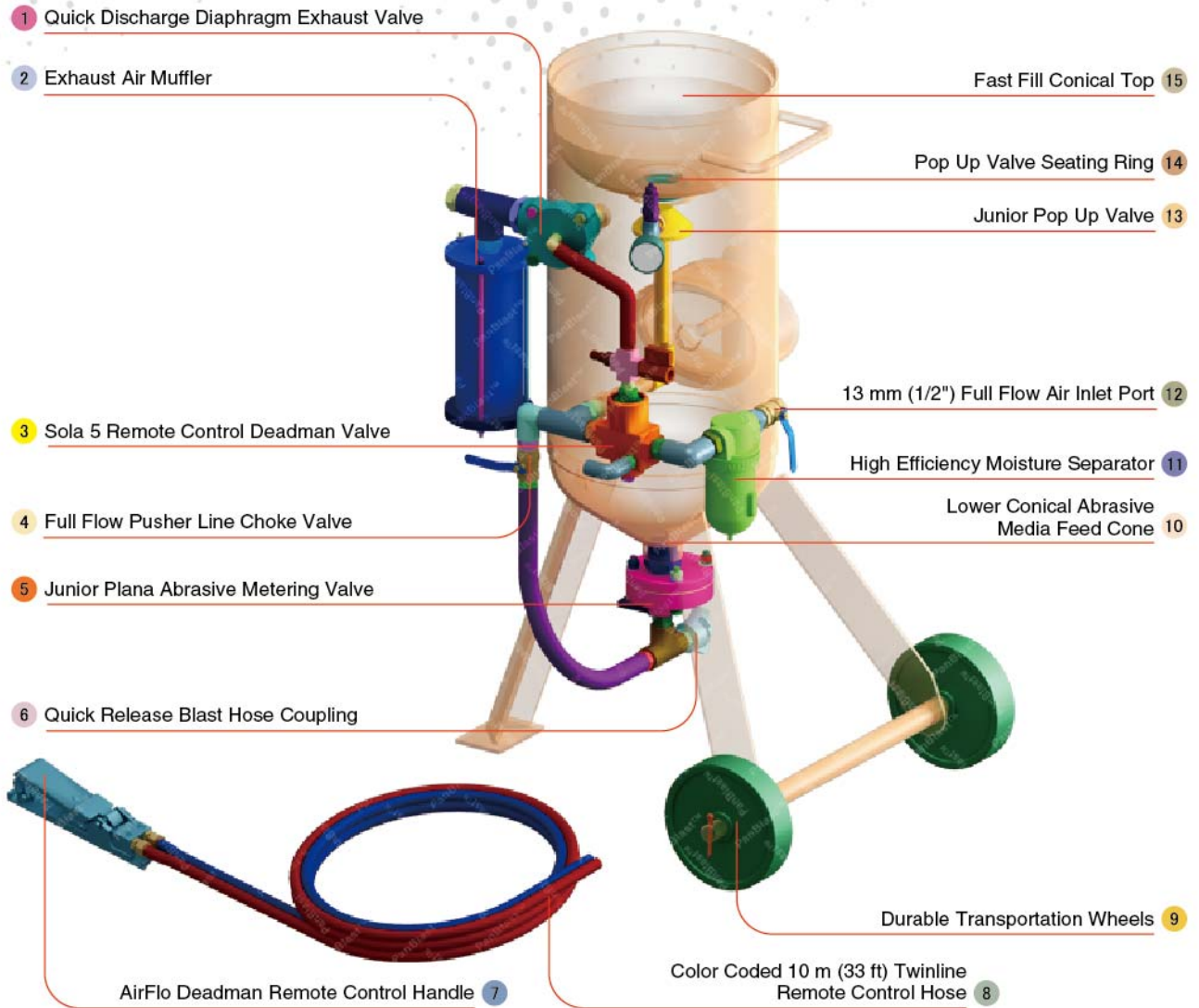
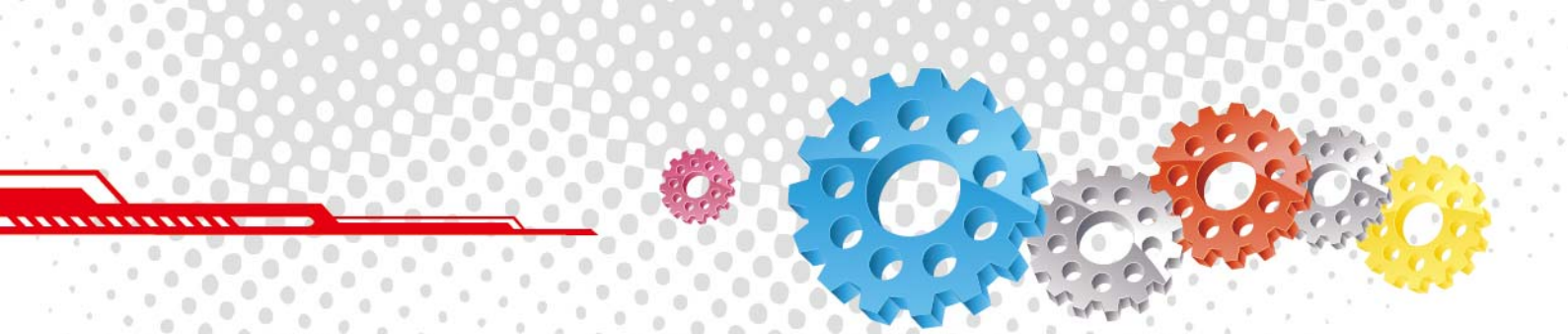
QuikStop IIS Pneumatic Handle



AirFlo Electric Handle



PBF II-1 Airline Filter



Component Highlights

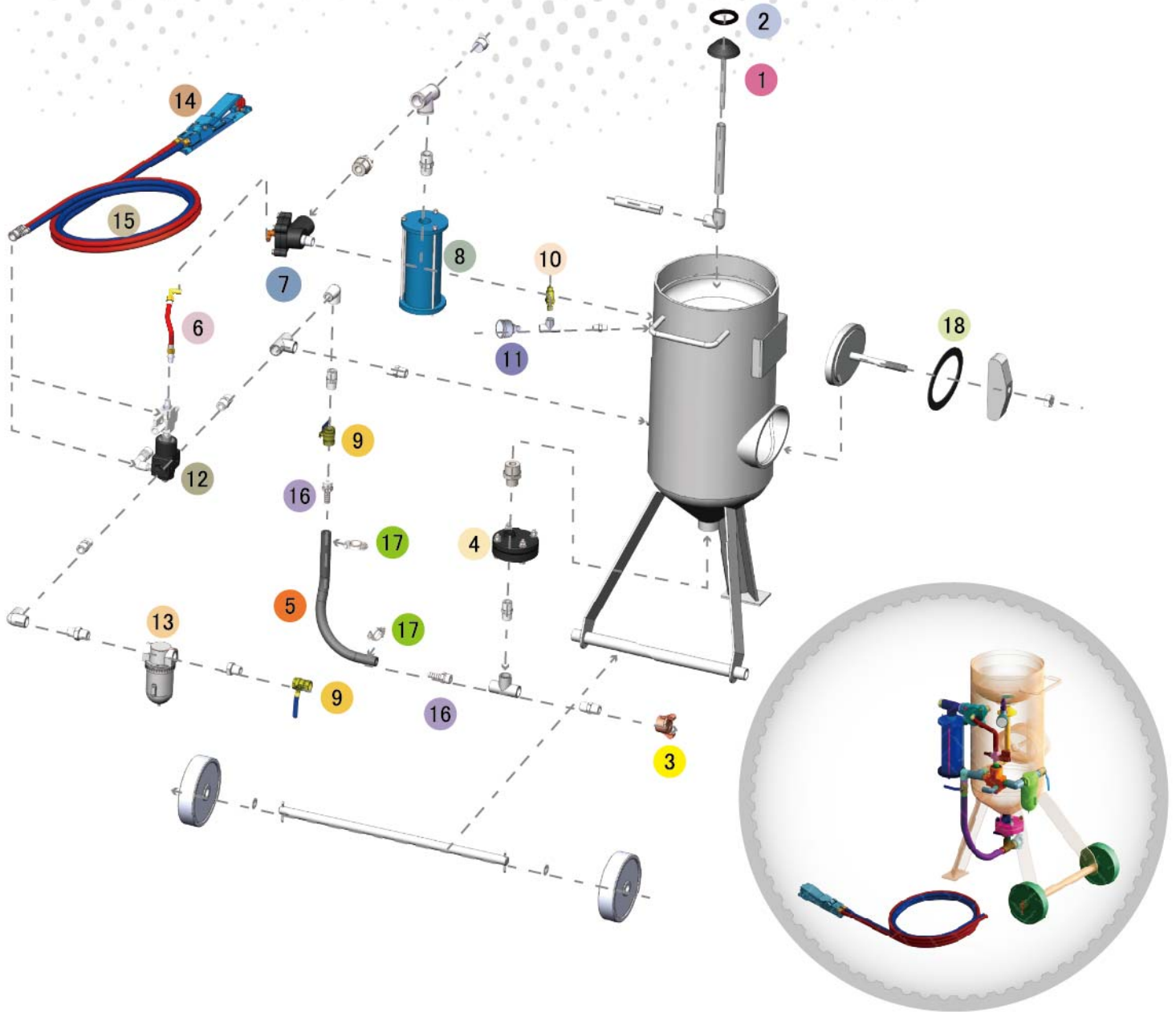
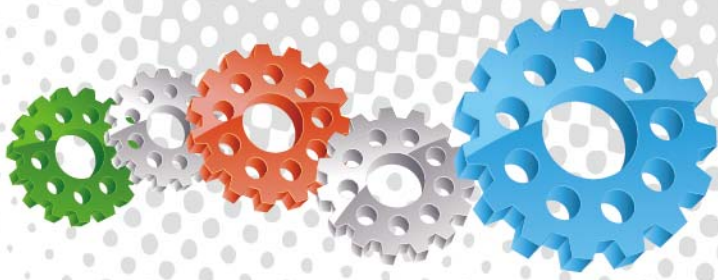


- 1 Quick Discharge Diaphragm Exhaust Valve
- 2 Exhaust Air Muffler
- 3 Sola 5 Remote Control Deadman Valve
- 4 Full Flow Pusher Line Choke Valve
- 5 Junior Plana Abrasive Metering Valve

- 6 Quick Release Blast Hose Coupling
- 7 AirFlo Deadman Remote Control Handle
- 8 Color Coded 10 m (33 ft) Twinline Remote Control Hose
- 9 Durable Transportation Wheels
- 10 Lower Conical Abrasive Media Feed Cone

- 11 High Efficiency Moisture Separator
- 12 13 mm (1/2") Full Flow Air Inlet Port
- 13 Junior Pop Up Valve
- 14 Pop Up Valve Seating Ring
- 15 Fast Fill Conical Top





Assemblies

Stock Code	Description	Dry Weight	Abrasive Capacity
BEP-PS-0001-14	BP50-1/AU Sola5 J/Plana AirFlo 150 PSI	70 kg (155 lbs)	14 litres (0.5 ft³)
BEP-PS-0067-00	BP50-1/CE/AU/MY Sola5 J/Plana AirFlo	70 kg (155 lbs)	14 litres (0.5 ft³)

Notation:
 AU: Approved by Worksafe, Australia.
 MY: Approved by Department of Occupational Safety and Health, Malaysia.



All data and information subject to change without prior notice. Brochure reference CAT-0101-01-01



Parts List



Description	Qty	Description	Qty	Description	Qty
1 Junior Pop Up Valve	1	8 Exhaust Muffler	1	15 10 m (33') Twinline Hose Assembly	1
2 Junior Seating Ring	1	9 13 mm (1/2") Ball Valve	2	16 KC Nipple	2
3 STC-0 Steel Threaded Pot Coupling	1	10 6 mm (1/4") - 125 PSI Pressure Relief Valve	1	17 Hose Clamp	2
4 Junior Plana NPT Valve	1	11 6 mm (1/4") Pressure Gauge - Rear Entry	1	18 Blast Pot-H/Hole 192x144-Sealing Gasket	1
5 Pusher Line	1	12 Sola 5 Inlet Valve Assembly	1		
6 Inter Connecting Hose	1	13 13 mm (1/2") Port Moisture Separator	1		
7 Sola 5 NPT Exhaust Valve	1	14 AirFlo Pneumatic Control Handle	1		